



CABLE INSTALLATION
AND SUPPORT

MADE A WHOLE LOT EASIER



A GLOBAL BUSINESS BUILT ON QUALITY, INNOVATION, SERVICE ...AND REAL FAMILY TIES



Business partners and brothers Nick and Matt Dykins' involvement in the business remains hands-on to this day. Matt, President of Slingco America, resides in the US, while Nick leads the UK operation as CEO of Slingco Limited.



Together they manage the companies' day-to-day business, new product development, and expanding global interests, most recently adding manufacturing facilities in India and opening sales offices in Moscow.



We've been living and breathing cable grips and wire rope for as long as we can remember. You can blame our Dad for that!

He founded Slingco more than 40 years ago. Since then, we've grown up and so has the company, evolving into an expert design and manufacturing operation, producing high quality cable grips, wire rope assemblies and more - products that are renowned for high performance in quality-critical applications.

Slingco is based in Atlanta, Georgia, but you'll find our products around the world, making heavy-duty cable installation and support a whole lot easier for people working in industries as varied as oil and gas, marine and offshore, public utilities, civil engineering, aerospace, transport, the military, performing arts, vehicle building, construction and more.

You can't make mistakes when you're dealing with products like ours. Too much depends on them. That's why we're obsessive about quality and innovation in design and manufacturing, and why nothing leaves our hands that isn't 100% dependable.

Because we understand exactly what your operation needs, we also know cost is a factor. We keep our prices realistic and hold a vast range of stock for fast - even same day - delivery.

We're brothers, partners and the driving force behind Slingco, but we're only a small part of the whole picture. We've got a fantastic team of skilled people who share our obsession with quality and great service. We're proud of every one of them.

Together, we're going to carry on developing outstanding products. We're going to carry on getting them out to you in record time. And we're going to carry on being the sort of company it's a pleasure to deal with.

MATT DYKINS
PRESIDENT, SLINGCO AMERICA

NICK DYKINS
CEO, SLINGCO LIMITED

CABLE PULLING

A Type – High Strength Cable Grip	4
MU Type – High Strength Cable Grip	4
ST Type – Single Eye Double Weave Cable Grip	6
SE Type – Single Eye Cable Grip	6
Junior Type Cable Grip	6
Fiber Optic Cable Grip	7
OS Type – Offset Eye	8
L Type – Lace Up Cable Grip	8
DE Type – Double Eye Cable Grip	12

UNDERGROUND

R Type – Rotating Eye Multi-Weave Cable Grip	9
RT Type – Rotating Eye Double Weave Cable Grip	9
Reinforced Eye Pulling Grips	13

SPLICING GRIPS

Open Ended Cable Grip	10
Splicing Grip – Rotating Swivel Link	11
Splicing Grip – Rotating Barrel	11

HOSE RESTRAINT & HEAVY DUTY LARGE DIAMETER CABLE GRIPS

Heavy Duty Hose Restraint Grips	12
Marine Cable Grips	30

NON-METALLIC (ARAMID) CABLE GRIPS

NS – Non-Metallic (Aramid) Single Eye Cable Grips	14
ND – Non-Metallic (Aramid) Double Eye Cable Grips	15
NO – Non-Metallic (Aramid) Offset Eye Cable Grips	15

CABLE CONTROL AND GUIDANCE / ACCESSORIES

Feed Tube for A Type Grips	4
Anti-Rotational Device (ARD)	7
Figure of 8 'Swing Link' Connector	11
Jib Head Adapter	21
Cable Laying Roller	26
Tri & Quad Pulling Sling	26
Directional Drilling Swivel	26
Banding Tools & Bands	28 - 29
Drive Wrench Assembly	31
Reel Lifter	32
Hand Line Tools	32
Mechanical Crimping Tool	33
60 Ton Hydraulic Crimping Tool	33
100 Ton Hydraulic Crimping Tool	34
Dirt Tarps	34
35kV Jumper Clamp	35
Rubber Blanket Clamp Pin	35
Guy Wire Dispenser	35
Pole Line Suspension Clamps	36

CABLE CONTROL AND GUIDANCE / ACCESSORIES ctd

LINE PULLING SWIVELS & ACCESSORIES

Line Pulling Swivels – Round and Bullet End	5
Swivel & Connector Grip Replacement Pins	5
Connectors: 90°, Rope to Rope, Rope to Swivel	10

CABLE SUPPORT

Wind Turbine Support Grip – Heavy Duty Thimble Offset Eye	27
Extended Thimble Eye Heavy Duty Double Weave SS Grip	27

STANDARD DUTY SUPPORT GRIPS

Single Eye Closed Mesh Cable Support Grip	16
Single Eye Split Mesh Lace Closing Cable Support Grip	16
Single Eye Split Mesh Rod Closing Cable Support Grip	16
Double Eye Closed Mesh Cable Support Grip	17
Double Eye Split Mesh Lace Closing Cable Support Grip	17
Double Eye Split Mesh Rod Closing Cable Support Grip	17
Offset Eye Closed Mesh Cable Support Grip	18
Offset Eye Split Mesh Lace Closing Cable Support Grip	18
Offset Eye Split Mesh Rod Closing Cable Support Grip	18
Universal Eye Closed Mesh Cable Support Grip	19
Universal Eye Split Mesh Lace Closing Cable Support Grip	19
Universal Eye Split Mesh Rod Closing Cable Support Grip	19
Conduit Riser Cable Grip – Stainless Steel	22

HEAVY DUTY SUPPORT GRIPS

Heavy Duty Support Grips – Single Eye	20
Heavy Duty Support Grips – Single Eye Lace-Up	20
Heavy Duty Support Grips – Single Eye Rod Closing	20
Heavy Duty Support Grips – Double Eye	20
Heavy Duty Support Grips – Double Eye Lace-Up	20
Heavy Duty Support Grips – Double Eye Rod Closing	20
Hooked Eye Conduit Support Cable Grip	22

LIGHT DUTY SUPPORT GRIPS

Bus Drop Grips	21
Service Drop Grips	21

SPECIALTY CABLE MANAGEMENT SUPPORT GRIPS

Stainless Steel Connector / Box Grip	23
Deluxe Cord Grips	24 – 25
Dust-Tight Cord Grips	25

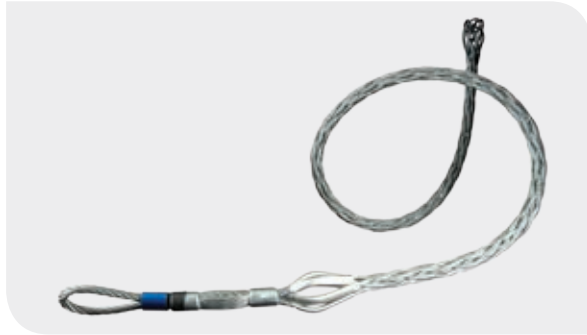
TECHNICAL INFORMATION

Swivel and Cable Grip Match Up	5
Important Technical and Safety Information	37
Single and Double Eye Cable Grip Installation Instructions	38
Lace Up Cable Grip Instructions	39

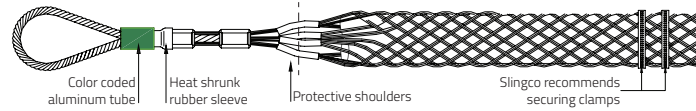
HEAVY DUTY CABLE GRIPS

A TYPE - HIGH STRENGTH CABLE GRIP

HEAVY DUTY



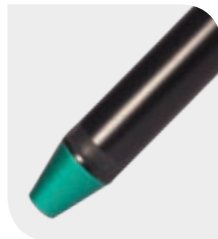
The strongest grip we produce; can be used for metal wire and synthetic rope pulls. Perfect for overhead transmission and distribution line pulling or any applications with heavy load ratings, e.g. gas, electric railroad, rigging lines and construction pulls. When pulling synthetic rope use a Slingco Feed Tube (see below) to make rope insertion a breeze. To avoid the effects of torsion a line pulling swivel that rotates under load should be used. Galvanized Steel and color coded for ease of identification.



Slingco Part No	Color Code	Rope Diameter Range		Conductor Diameter Range		Overall length		Lattice Length		Approx. Break Load	
		in	mm	in	mm	in	mm	in	mm	lb	kg
ZCS1799	Black	0.25 - 0.65	6-16	0.19 - 0.40	5-10	38	965	28	710	7,000	3,180
ZCS3020	Purple	0.30 - 0.40	7.5-10	0.25 - 0.40	6-10	42	1,067	30	760	10,000	4,530
ZCS1800	Dark Green	0.50 - 0.90	13-23	0.38 - 0.63	9.7-16	51	1,300	37	940	14,000	6,360
ZCS3522	Grey	0.44 - 0.90	11-23	0.44 - 0.63	11-16	110	2,800	97	2,470	20,000	9,072
ZCS1801	Red	0.75 - 1.10	19-28	0.63 - 0.88	16-22	74	1,880	58	1,473	20,000	9,072
ZCS1802	Blue	1.00 - 1.50	25-38	0.88 - 1.13	22-29	80	2,032	61	1,549	30,700	13,955
ZCS1803	Yellow	1.25 - 1.70	32-43	1.13 - 1.38	29-35	112	2,845	90	2,299	47,000	21,360
ZCS1804	Aluminum	1.50 - 2.10	38-53	1.38 - 1.90	35-50	119	3,020	92	2,336	67,000	30,455
ZCS6712	-	-	-	2.00 - 2.60	50.8 - 66.0	109.25	2,775	100	2,557	70,528	32,000
ZCS7852	-	-	-	2.50 - 3.00	63.5-76.2	109.25	2,775	100	2,557	70,528	32,000

FEED TUBE

Due to the tight construction of the A Type cable grip, we recommend using the Slingco Feed Tube when inserting cable or rope into the grips. For ease of use, our feed tubes are color-coded to match the A Type Cable grip.

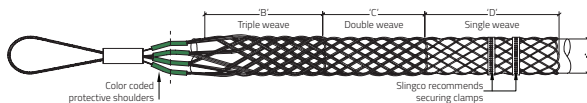


Slingco part no.	Tube to fit rope diameter inches (mm)	Feed tube length inches (mm)	Matches Slingco Cable Grip part no.	Cable grip color
FTU1890	0.25 - 0.65 (6 - 16)	28 (713)	ZCS1799, ZCS3020	Black
FTU1891	0.50 - 0.90 (13 - 23)	40 (1,018)	ZCS1800, ZCS3522	Dark green
FTU1892	0.75 - 1.10 (19 - 28)	52 (1,324)	ZCS1801	Red
FTU1893	1.00 - 1.50 (25 - 38)	67 (1,706)	ZCS1802	Blue
FTU1894	1.25 - 1.70 (32 - 43)	83 (2,113)	ZCS1803	Yellow
FTU1895	1.50 - 2.10 (38 - 53)	96 (2,444)	ZCS1804	Aluminum

MU TYPE - HIGH STRENGTH CABLE GRIP

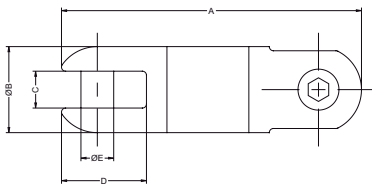
HEAVY-MEDIUM DUTY

This grip's triple weave construction is ideal for heavy loads. MU cable grips are color coded for ease of identification. Perfect for stringing overhead transmission and distribution lines and heavy-load pulls of any kind. Use with bare or insulated cable, conductor or wire. The flexible eye connects with Slingco line pulling swivels for trouble free pulling applications. Made of Galvanized Steel.



Slingco Part No	Color Code	Range		Lattice Length		Approx. Break Load	
		in	mm	in	mm	lb	kg
ZCS1710	Dark Green	0.25 - 0.50	6-12	31	787	7,000	3,170
ZCS1711	Brown	0.50 - 0.75	12-19	45	1,143	10,500	4,760
ZCS1712	Light Blue	0.75 - 1.00	19-25	43	1,092	14,100	6,395
ZCS1713	Gold	1.00 - 1.25	25-32	65	1,651	25,000	11,340
ZCS1714	Black	1.25 - 1.50	32-38	59	1,499	31,000	14,065
ZCS1715	Red	1.50 - 1.75	38-44	82	2,083	31,000	14,065
ZCS1716	Dark Blue	1.75 - 2.25	44-57	82	2,083	49,000	22,230
ZCS1750	Yellow	2.00 - 2.50	50-63	72	1,829	49,000	22,230
ZCS1751	Orange	2.50 - 3.00	63-76	72	1,829	49,000	22,230
ZCS1752	Aluminum	3.00 - 3.50	76-89	74	1,880	49,000	22,230
ZCS1753	Light Green	3.50 - 4.00	89-102	76	1,930	49,000	22,230

LINE PULLING SWIVEL - BRIGHT ZINC PLATED STEEL



Swivels designed for use in stringing high tension wires for electrical transmission and distribution. Swivels are important in pulling when the lines develop torsion during installation. Swivels will release torque and prevent it from reaching dangerous levels, which can cause damage to the cable. All swivels are stringently quality tested and inspected to ensure optimum performance and reliability.

Slingco part no.	Safe working load lb (kg)		A in (mm)	Ø B in (mm)	C in (mm)	D in (mm)	Ø E in (mm)
	Underground	Overhead					
ZSW2091	2,250 (1,015)	1,350 (610)	3 3/8 (86)	7/8 (22)	3/8 (10)	7/8 (22)	5/16 (8)
ZSW2092	3,500 (1,590)	2,100 (955)	4 (99)	1 (25)	7/16 (11)	11/16 (26)	3/8 (10)
ZSW2093	5,000 (2,240)	3,000 (1,345)	4 15/16 (126)	1 1/4 (32)	9/16 (14)	1 1/4 (32)	3/8 (10)
ZSW2094	7,000 (3,170)	4,200 (1,900)	5 3/16 (132)	1 3/8 (35)	9/16 (14)	1 13/32 (36)	1/2 (12.5)
ZSW2096	10,000 (4,530)	6,000 (2,700)	6 3/16 (157)	1 5/8 (41)	45/64 (18)	1 3/4 (45)	13/20 (16.5)
ZSW2097	15,000 (6,730)	9,000 (4,030)	7 5/16 (186)	2 3/32 (53)	25/32 (20)	2 1/8 (54)	23/32 (18)

3:1 factor of safety used, based on the ultimate load for underground use

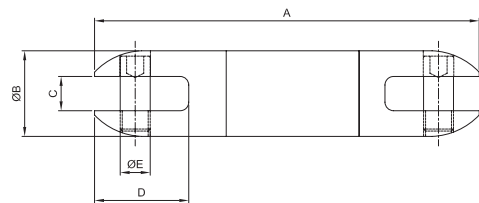
5:1 factor of safety used, based on the ultimate load for overhead use

Swivel and Cable Grip match-up

Revolving Eye	Flexible Eye MU	A-Type	Minimum Recommended Swivel
ZCS2177	ZCS1710	ZCS1799	ZSW2092
ZCS2178	ZCS1711	ZCS3020	ZSW2093
ZCS2179	ZCS1712	ZCS1800	ZSW2093
ZCS2180	ZCS1713	ZCS3522	ZSW2096
ZCS2181	ZCS1714	ZCS1801	ZSW2096
ZCS2182	ZCS1715	ZCS1802	ZSW2096
ZCS2183	ZCS1716	ZCS1803	ZSW2097

The above is intended as a rough guideline. The workload should be determined by the project requirements. A swivel with a higher working load than the recommended swivel may be used.

LINE PULLING SWIVEL - GALVANIZED



Slingco Line Swivels are designed to the highest specifications for underground and overhead pulling applications. All swivels are stringently quality tested and inspected to ensure optimum reliability and performance.

Slingco part no.	Safe working load lb (kg)		A in (mm)	Ø B in (mm)	C in (mm)	D in (mm)	Ø E in (mm)
	Underground	Overhead					
ZSW2649	4,000 (1,815)	2,400 (1,085)	4 3/4 (121)	1 1/4 (32)	19/32 (15)	1 3/16 (30)	3/8 (10)
ZSW2929	8,000 (3,630)	4,800 (2,175)	5 3/8 (136)	1 1/2 (38)	5/8 (16)	1 3/8 (35)	7/16 (11)
ZSW6122	10,000 (4,530)	6,000 (2,700)	7 (178)	1 7/8 (48)	3/4 (19)	1 3/4 (44)	5/8 (16)
ZSW6123	16,000 (7,142)	9,600 (4,355)	10 5/32 (258)	2 7/16 (62)	1 (25)	2 11/16 (68)	7/8 (22)
ZSW2857	30,000 (13,610)	18,000 (8,165)	11 1/8 (283)	2 1/2 (63)	1 (25)	2 3/4 (70)	7/8 (22)

3:1 factor of safety used, based on the ultimate load for underground use

5:1 factor of safety used, based on the ultimate load for overhead use

Swivel or Connector Model	ZSW2091	ZSW2092	ZSW2093	ZSW2094	ZSW2096 ZSW6122	ZSW2097	ZSW2929	ZSW2649	ZSW2857	ZSW6123	ZSW6554	ZSW6555	ZSW6556	ZSW6557 ZSW6558 ZSW6559 ZSW6560
Replacement Pin (HEX)	SWI2859	SWI2810	SWI2340	SWI2339	SWI2343	SWI2344	SWI2801	SWI2648	SWI2748	SWI5184	SWI2859	SWI2339	SWI5309	SWI5310

SAFETY NOTE: All Slingco Line Pulling Swivels are designed for straight line pulling and will not support side loads as would be encountered traveling over a bull wheel. Swivel selection should be based on pulling line diameter, grip size, opening dimensions, pin sizes, working load, and sheave groove diameter. Swivels are not designed for general lifting

MEDIUM-LIGHT DUTY CABLE GRIPS

ST TYPE - SINGLE EYE DOUBLE WEAVE CABLE GRIP MEDIUM DUTY



This Slingco grip features a double weave construction for medium to heavy pulling applications in underground installations.

Slingco Part No	Range		Lattice Length		Approx. Break Load	
	in	mm	in	mm	lb	kg
SHORT LENGTH - GALVANIZED STEEL						
ZCS2511	0.50 - 0.62	13-16	21	534	4,500	2,040
ZCS2512	0.62 - 0.75	16-19	24	610	5,600	2,540
ZCS2513	0.75 - 1.00	19-25	24	610	6,800	3,085
ZCS2514	1.00 - 1.50	25-38	24	610	9,600	4,355
ZCS2515	1.50 - 2.00	38-50	24	610	16,400	7,441
ZCS2516	2.00 - 2.50	50-63	24	610	18,500	8,390
ZCS2517	2.50 - 3.00	63-76	24	610	24,500	11,115
ZCS2518	3.00 - 3.50	76-89	24	610	24,500	11,115
ZCS2519	3.50 - 4.00	89-102	26	660	31,000	14,065
LONGER LENGTH - GALVANIZED STEEL						
ZCS2520	0.75 - 1.00	19-25	36	914	6,800	3,085
ZCS2521	1.00 - 1.50	25-38	36	914	9,600	4,355
ZCS2522	1.50 - 2.00	38-50	36	914	16,400	7,440
ZCS2523	2.00 - 2.50	50-63	36	914	18,500	8,390
ZCS2524	2.50 - 3.00	63-76	36	914	24,500	11,115
ZCS2777	3.00 - 3.50	76-89	36	914	24,500	11,115
ZCS2778	3.50 - 4.00	89-102	40	1,010	31,000	14,065

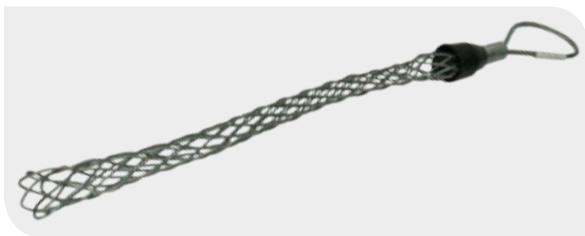
SE TYPE - SINGLE EYE CABLE GRIP MEDIUM-LIGHT DUTY



Ideal for pulling light to medium loads; typical application - 'standard pull' of single or group of cables, where additional support is unnecessary, or if used in conjunction with other cable grips.

Slingco Part No	Range		Lattice Weave	Lattice Length		Overall Length		Approx. Break Load	
	in	mm		in	mm	in	mm	lb	kg
SINGLE EYE STANDARD GRIP - GALVANIZED									
ZCS0320	0.25 - 0.50	10-13	Single	9	230	12	305	1,680	760
ZCS0321	0.50 - 0.75	13-19	Single	14	355	17	430	2,240	1,015
ZCS0322	0.75 - 1.00	19-25	Single	16	405	20	510	5,600	2,540
ZCS0323	1.00 - 1.50	25-38	Single	18	455	24	610	7,840	3,555
ZCS0324	1.50 - 2.00	38-50	Double	21	535	29	735	11,200	5,080
ZCS0325	2.00 - 2.50	50-63	Double	24	610	34	865	11,200	5,080
ZCS0326	2.50 - 3.50	63-89	Double	27	685	39	990	13,440	6,095
ZCS0327	3.50 - 4.50	89-115	Double	27	685	39	990	15,680	7,110
ZCS0821	4.50 - 5.50	115-140	Double	27	685	39	990	15,680	7,110
SINGLE EYE STANDARD GRIP - 316 STAINLESS STEEL									
ZCS1380	0.25 - 0.50	10-13	Single	9	230	12	305	1,344	610
ZCS1523	0.50 - 0.75	13-19	Single	14	355	17	430	1,792	810
ZCS1373	0.75 - 1.00	19-25	Single	16	405	20	510	4,480	2,030
ZCS1952	1.00 - 1.50	25-38	Single	18	455	24	610	6,272	2,845
ZCS1381	1.50 - 2.00	38-50	Double	21	535	29	735	8,960	4,065
ZCS1977	2.00 - 2.50	50-63	Double	24	610	34	865	8,960	4,065
ZCS1979	2.50 - 3.50	63-89	Double	27	685	39	990	10,752	4,875
ZCS1980	3.50 - 4.50	89-115	Double	27	685	39	990	12,544	5,690
ZCS1981	4.50 - 5.50	115-140	Double	27	685	39	990	12,544	5,690

JUNIOR TYPE CABLE GRIP LIGHT DUTY



Slingco Part No	Range		Lattice Length (M)		Eye Length (B)		Approx. Break Load	
	in	mm	in	mm	in	mm	lb	kg
ZCS8562	0.25 - 0.36	6.4 - 9.1	7.5	190.5	2.5	63.5	450	204
ZCS8563	0.37 - 0.49	9.4 - 12.4	11.0	279.4	3.0	76.2	900	408
ZCS8564	0.50 - 0.61	12.7 - 15.5	12.5	317.5	3.0	76.2	1,300	589
ZCS8565	0.62 - 0.74	15.7 - 19.0	16.5	419.1	4.5	114.3	1,950	884
ZCS8566	0.75 - 0.99	19.1 - 25.1	17.0	431.8	4.0	101.6	2,800	1,270
ZCS8567	1.00 - 1.25	25.4 - 31.5	17.5	444.5	4.5	114.3	3,900	1,769

FIBER OPTIC CABLE GRIP



Dual weave design from galvanized wire rope. Used for the installation of fiber optic cables for either overhead or underground applications. Made of Galvanized Steel.

Slingco Part No	Range		Lattice Length		Overall Length		Approx. Break Load	
	in	mm	in	mm	in	mm	lb	kg
ZCS2008	0.11 - 0.23	2.5-5.6	11	265	18	455	950	431
ZCS2009	0.21 - 0.36	5.3-9.2	15	370	22	560	1,650	748
ZCS2010	0.32 - 0.49	8.1-12.5	19	470	27	690	2,200	998
ZCS2011	0.42 - 0.62	10.7- 5.8	20	515	29	735	2,750	1,247
ZCS2012	0.53 - 0.75	13.5-19.1	23	595	32	815	3,700	1,678
ZCS2013	0.64 - 0.88	16.3-22.4	25	645	34	865	4,250	1,678
ZCS2014	0.75 - 1.00	19.1-25.5	27	720	37	940	4,250	1,928

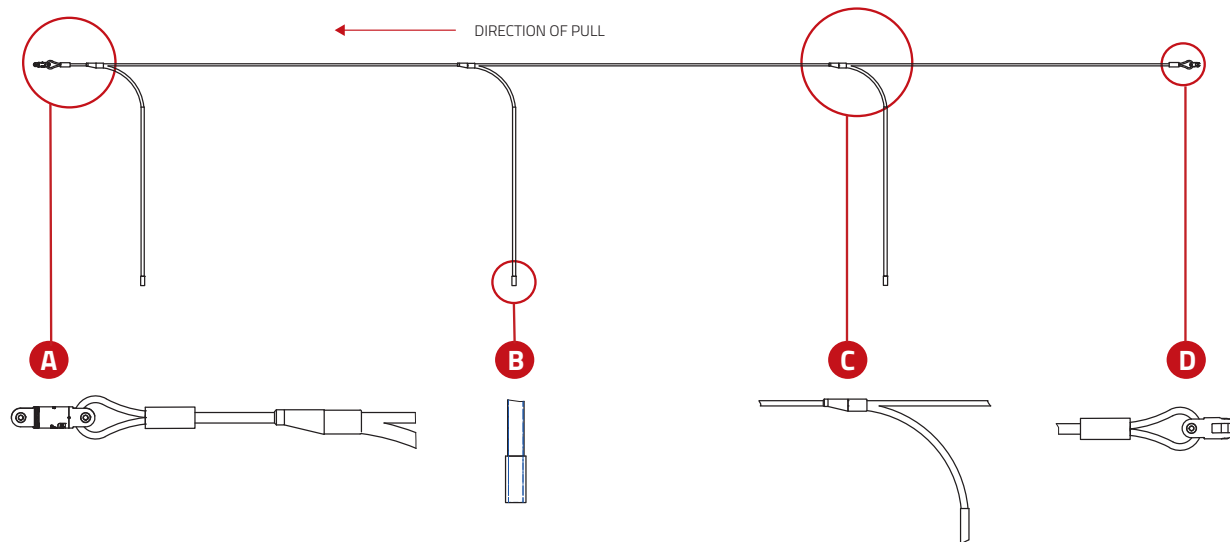
ANTI ROTATIONAL DEVICE



The device prevents the cable from twisting as it travels over pulling blocks. Left uncontrolled, the optical cable's delicate glass fibers could be permanently damaged during installation.

- Stops cables from twisting as they pass over pulling blocks
- For use with fiber optic and OPGW cable
- Prevents irreparable damage to delicate fiber optics caused by cable twists during installation
- The ARD has weighted attachments that hang down while stringing, keeping the ARD vertical to stop cable rotation
- ARD attachments collapse in line, enabling them to travel easily over pulling blocks
- The ARD includes one 5,000 lb swivel attached to the head of the device

Specification	
Slingco Part No.	ZAD3799
Overall Length	29' Approx.
Working load (@3:1 Safety Factor)	5,000 lbs
Length of Attachments	8' Approx.
Weight of Attachment	14 lbs each Approx.



MEDIUM-LIGHT DUTY CABLE GRIPS

OS TYPE – OFFSET EYE CABLE GRIP



Similar to the SE Type single eye cable grip, but for when offset positioning is required. Excellent for pulling slack out of lines that have been pulled. May also be used for removing underground cables when end of cable is available.

Slingco Part No	Range		Lattice Weave	Lattice Length		Overall Length		Approx. Break Load	
	in	mm		in	mm	in	mm	lb	kg
OFFSET EYE STANDARD GRIP - GALVANIZED									
ZCS1860	0.25 - 0.50	6-13	Single	9	230	12	305	1,680	760
ZCS1861	0.50 - 0.75	13-19	Single	14	355	17	430	2,240	1,015
ZCS1862	0.75 - 1.00	19-25	Single	16	405	20	510	5,600	2,540
ZCS1863	1.00 - 1.50	25-38	Single	18	455	24	610	7,840	3,555
ZCS1864	1.50 - 2.00	38-50	Double	21	535	29	735	11,200	5,080
ZCS1865	2.00 - 2.50	50-63	Double	24	610	34	865	11,200	5,080
ZCS1866	2.50 - 3.50	63-89	Double	27	685	39	990	13,440	6,095
ZCS1867	3.50 - 4.50	89-115	Double	27	685	39	990	15,680	7,110
ZCS1974	4.50 - 5.50	115-140	Double	27	685	39	990	15,680	7,110
OFFSET EYE STANDARD GRIP - 316 STAINLESS STEEL									
ZCS1986	0.25 - 0.50	6-13	Single	9	230	12	305	1,344	610
ZCS1987	0.50 - 0.75	13-19	Single	14	355	17	430	1,792	810
ZCS1988	0.75 - 1.00	19-25	Single	16	405	20	510	4,480	2,030
ZCS1989	1.00 - 1.50	25-38	Single	18	455	24	610	6,272	2,845
ZCS1990	1.50 - 2.00	38-50	Double	21	535	29	735	8,960	4,065
ZCS1991	2.00 - 2.50	50-63	Double	24	610	34	865	8,960	4,065
ZCS1992	2.50 - 3.50	63-89	Double	27	685	39	990	10,752	4,875
ZCS1993	3.50 - 4.50	89-115	Double	27	685	39	990	12,544	5,690
ZCS1994	4.50 - 5.50	115-140	Double	27	685	39	990	12,544	5,690
ZCS3994	5.50 - 7.00	140-180	Double	24	610	39	990	4,500	2,009
ZCS4069	8.0 - 9.0	203-229	Double	59	1,500	74	1,880	20,000	8,928

L TYPE - LACE UP CABLE GRIP

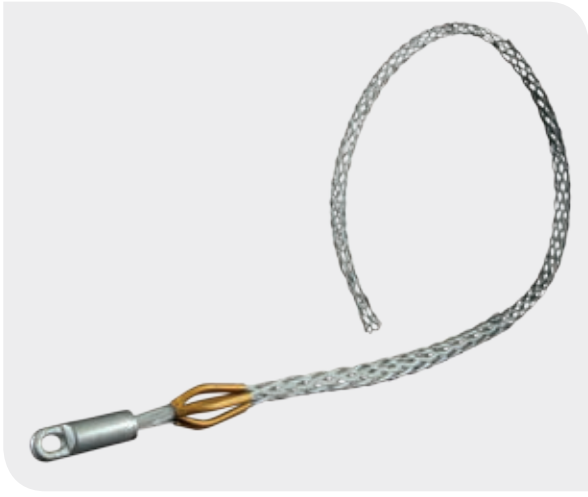


Ideal for pulling light to medium loads; the L-type is fitted to the cable being pulled by stitching it together, like a football. Mainly used where a 'typical' cable grip can't be fitted over a connector at the end of a cable. For use in pulling when the end is not accessible. The L Type is wrapped around the cable, then closed with the wire lace provided. See Lace Up instructions on page 31.

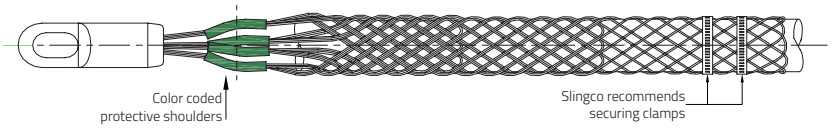
Slingco Part No	Range		Lattice Weave	Lattice Length		Overall Length		Approx. Break Load	
	in	mm		in	mm	in	mm	lb	kg
LACE UP STANDARD GRIP - GALVANIZED									
ZCS1157	0.25 - 0.50	10-13	Single	9	230	12	305	1,680	760
ZCS0872	0.50 - 0.75	13-19	Single	14	355	17	430	2,240	1,015
ZCS0871	0.75 - 1.00	19-25	Single	16	405	20	510	5,600	2,540
ZCS0328	1.00 - 1.50	25-38	Single	18	455	24	610	7,840	3,555
ZCS0329	1.50 - 2.00	38-50	Double	21	535	29	735	11,200	5,080
ZCS0330	2.00 - 2.50	50-63	Double	24	610	34	865	11,200	5,080
ZCS0331	2.50 - 3.50	63-89	Double	27	685	39	990	13,440	6,095
ZCS0853	3.50 - 4.50	89-115	Double	27	685	39	990	15,680	7,110
ZCS1109	4.50 - 5.50	115-140	Double	27	685	39	990	15,680	7,110
ZCS4463	4.72 - 5.90	120-150	Triple	59	1,500	102	2,600	32,928	14,700
ZCS3270	7.90 - 8.70	200-220	Triple	78	2,000	102	2,600	71,680	32,000
LACE UP STANDARD GRIP - 316 STAINLESS STEEL									
ZCS1983	0.25 - 0.50	10-13	Single	9	230	12	305	1,344	610
ZCS1796	0.50 - 0.75	13-19	Single	14	355	17	430	1,792	810
ZCS1789	0.75 - 1.00	19-25	Single	16	405	20	510	4,480	2,030
ZCS1797	1.00 - 1.50	25-38	Single	18	455	24	610	6,272	2,845
ZCS1984	1.50 - 2.00	38-50	Double	21	535	29	735	8,960	4,065
ZCS2466	2.00 - 2.50	50-63	Double	24	610	34	865	8,960	4,065
ZCS0816	2.50 - 3.50	63-89	Double	27	685	39	990	10,752	4,875
ZCS5094	2.75 - 3.44	69-87	Multiple	55	1,390	81	2,063	40,000	17,857
ZCS1356	3.50 - 4.50	89-115	Double	27	685	39	990	12,544	5,690
ZCS2832	3.50 - 4.50	89-115	Triple	27	685	39	990	14,012	6,300
ZCS1355	4.50 - 5.50	115-140	Double	27	685	39	990	12,544	5,690
ZCS2833	4.50 - 5.50	115-140	Triple	27	685	39	990	16,128	7,315

R TYPE - ROTATING EYE MULTI-WEAVE CABLE GRIP **UNDERGROUND**

Like the MU type, the rotating eye cable grip has a triple weave construction and is color coded for ease of identification. The steel forged revolving head is ideal for connecting to Slingco swivels. Warning: The Slingco rotating eye does not revolve under load and does not replace the use of a line swivel. Please see page 5 for swivel and grip match-up and safety and technical information. Made of Galvanized Steel.



Slingco Part No	Color Code	Range		Lattice Length		Approx. Break Load	
		in	mm	in	mm	lb	kg
ZCS2177	Dark Green	0.25 - 0.50	6-12	31	787	7,000	3,170
ZCS2178	Brown	0.50 - 0.75	12-19	45	1,143	10,500	4,760
ZCS2179	Light Blue	0.75 - 1.00	19-25	43	1,092	14,100	6,395
ZCS2180	Gold	1.00 - 1.25	25-32	65	1,651	25,000	11,340
ZCS2181	Black	1.25 - 1.50	32-38	59	1,499	31,000	14,065
ZCS2182	Red	1.50 - 1.75	38-44	82	2,083	31,000	14,065
ZCS2183	Dark blue	1.75 - 2.25	44-57	82	2,083	43,000	19,510
ZCS2779	Yellow	2.00 - 2.50	50-63	72	1,829	43,000	19,510
ZCS2780	Orange	2.50 - 3.00	63-76	72	1,829	43,000	19,510
ZCS2781	Aluminum	3.00 - 3.50	76-89	74	1,880	43,000	19,510
ZCS2782	Light Green	3.50 - 4.00	89-102	76	1,930	43,000	19,510



RT TYPE - ROTATING EYE DOUBLE WEAVE CABLE GRIP **UNDERGROUND**



Slingco Part No	Range		Lattice Length		Approx. Break Load	
	in	mm	in	mm	lb	kg
SHORT LENGTH - GALVANIZED STEEL						
ZCS2734	0.50 - 0.62	13-16	11	280	5,600	2,540
ZCS2735	0.62 - 0.75	16-19	11	280	6,800	3,085
ZCS2736	0.75 - 1.00	19-25	20	508	6,800	3,085
ZCS2738	1.00 - 1.50	25-38	21	533	12,800	5,805
ZCS2739	1.50 - 2.00	38-50	25	635	16,400	7,440
ZCS2740	2.00 - 2.50	50-63	26	660	27,200	12,340
ZCS2741	2.50 - 3.00	63-76	28	711	33,000	14,970
ZCS2742	3.00 - 3.50	76-89	30	762	41,000	18,600
ZCS2743	3.50 - 4.00	89-102	32	813	43,000	19,510
ZCS2744	4.00 - 4.50	102-115	33	838	43,000	19,510
STANDARD - LONGER LENGTH - GALVANIZED STEEL						
ZCS2745	0.50 - 0.62	13-16	16	406	5,600	2,540
ZCS2746	0.62 - 0.75	16-19	16	406	6,800	3,085
ZCS2747	0.75 - 1.00	19-25	32	812	9,600	4,355
ZCS2748	1.25 - 1.50	25-38	33	838	16,400	5,805
ZCS2749	1.50 - 2.00	38-50	34	863	16,400	7,440
ZCS2750	2.00 - 2.50	50-63	36	914	27,300	12,340
ZCS2751	2.50 - 3.00	63-76	38	965	33,000	14,970
ZCS2752	3.00 - 3.50	76-89	39	990	41,000	18,600
ZCS2753	3.50 - 4.00	89-102	41	1,041	43,000	19,510
ZCS2754	4.00 - 4.50	102-115	42	1,066	43,000	19,510
ZCS2755	4.50 - 5.00	115-127	58	1,473	43,000	19,510
ZCS2756	5.00 - 6.00	127-153	60	1,524	43,000	19,510
ZCS2757	6.00 - 7.00	153-178	66	1,676	43,000	19,510

Double weave construction for medium to heavy pulling applications in underground installations. Additionally its steel forged revolving head is ideal for connecting to Slingco swivels. Warning: The Slingco RT Type Rotating Eye Cable Grip does not revolve under load. The rotating eye does not replace the need for a swivel. Please see page 5 for swivel and grip match-up and safety and technical information.

OPEN ENDED CABLE GRIP

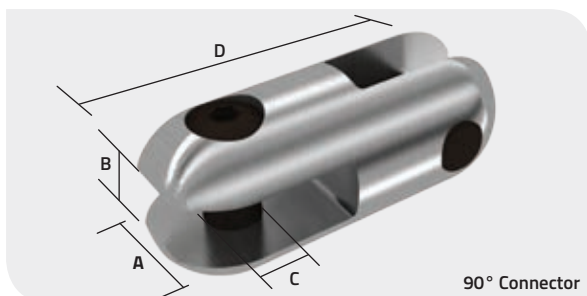


Ideal for joining two cables to form a continuous loop. Typical application: replacement of lift cables, where the old cable would be attached to the new one, and the cable then fed around with ease. Also used to temporarily splice cable and conductor where torsion forces are NOT an issue. Torsion should be released prior to splicing. Where torsion is present a swivel and two grips should be used.

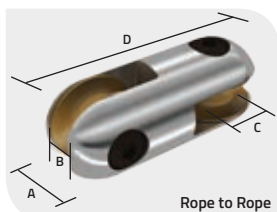
Slingco Part No	Range		Lattice Weave	Lattice Length		Approx. Break Load	
	in	mm		in	mm	lb	kg
OPEN ENDED STANDARD GRIP - GALVANIZED							
ZCS0313	0.25 - 0.50	6-13	Single	15	380	1,680	760
ZCS6420	0.25 - 0.50	6-13	Double	22	559	3,500	1,588
ZCS0314	0.50 - 0.75	13-19	Single	24	610	2,240	1,015
ZCS6421	0.50 - 0.75	13-19	Double	30	762	4,500	2,040
ZCS6425	0.50 - 0.75	13-19	Multi	70	1,779	7,500	3,400
ZCS0315	0.75 - 1.00	19-25	Single	28	710	5,600	2,540
ZCS6422	0.75 - 1.00	19-25	Double	30	762	8,000	3,630
ZCS6426	0.75 - 1.00	19-25	Multi	80	2,032	11,800	5,352
ZCS0316	1.00 - 1.50	25-38	Single	32	815	7,840	3,555
ZCS6423	1.00 - 1.50	25-38	Double	36	915	10,000	4,537
ZCS6427	1.00 - 1.50	25-38	Multi	90	2,285	20,000	9,070
ZCS0317	1.50 - 2.00	38-50	Double	36	915	11,200	5,080
ZCS0318	2.00 - 2.50	50-63	Double	42	1,065	11,200	5,080
ZCS1158	2.50 - 3.50	63-89	Double	48	1,220	13,440	6,095
ZCS1159	3.50 - 4.50	89-115	Double	54	1,370	15,680	7,110
ZCS6424	4.25 - 4.88	108-124	Triple	55	1,400	19,500	8,847
ZCS1975	4.50 - 5.50	115-140	Double	54	1,370	15,680	7,110
OPEN ENDED STANDARD GRIP - 316 STAINLESS STEEL							
ZCS1995	0.25 - 0.50	6-13	Single	15	380	1,344	610
ZCS1996	0.50 - 0.75	13-19	Single	24	610	1,792	810
ZCS1997	0.75 - 1.00	19-25	Single	28	710	4,480	2,030
ZCS1998	1.00 - 1.50	25-38	Single	32	815	6,272	2,845
ZCS1999	1.50 - 2.00	38-50	Double	36	915	8,960	4,065
ZCS2000	2.00 - 2.50	50-63	Double	42	1,065	8,960	4,065
ZCS2001	2.50 - 3.50	63-89	Double	48	1,220	10,752	4,875
ZCS2002	3.50 - 4.50	89-115	Double	54	1,370	12,544	5,690
ZCS2003	4.50 - 5.50	115-140	Double	54	1,370	12,544	5,690

CONNECTORS: 90°, ROPE TO ROPE, ROPE TO SWIVEL

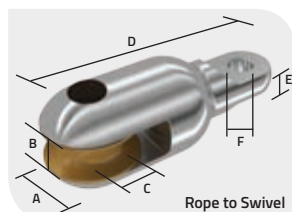
Use to connect rope, swivels and other objects. With high strength pins and smooth rollers you can safely connect rope without fear of fraying or damage. Use the convenient 90° connectors to link wire and other non-rope items. Connectors have high strength hex pins. The Rope to Rope connector has two rollers to protect rope from becoming frayed.



90° Connector



Rope to Rope



Rope to Swivel

90° Connector

Slingco part no.	Safe working load lb (kg)	A in (mm)	B in (mm)	C in (mm)	D in (mm)	Weight lb (kg)
ZSW6554	2,500 (1,134)	7/8 (22)	3/8 (9.6)	5/16 (8)	2 1/8 (54.0)	0.17 (0.08)
ZSW6555	5,000 (2,240)	1 1/4 (31.8)	17/32 (13.5)	13/32 (10)	2 7/8 (73.0)	0.46 (0.21)
ZSW6556	9,000 (4,030)	1 1/2 (38.1)	19/32 (15)	1/2 (12.5)	3 3/8 (86)	0.73 (0.33)
ZSW6557	15,000 (6,800)	2 (50.8)	25/32 (20)	11/16 (18.0)	4 9/16 (116)	2.00 (0.91)

Rope to Rope Connector

Slingco part no.	Safe working load lb (kg)	Max rope dia. in (mm)	A in (mm)	B in (mm)	C in (mm)	D in (mm)	Weight lb (kg)
ZSW6558	15,000 (6,800)	7/8 (22.2)	2 (50.8)	15/16 (24)	11/16 (18)	5 1/2 (140)	2.70 (1.23)

Rope to Swivel Connector

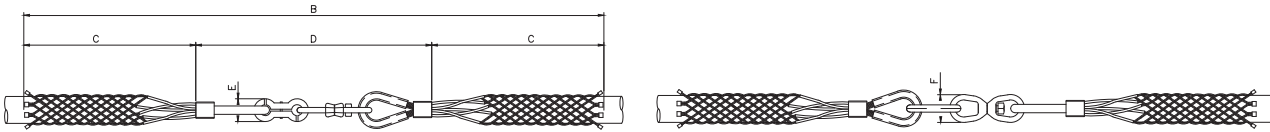
Slingco part no.	Safe working load lb (kg)	Max rope dia. in (mm)	A in (mm)	B in (mm)	C in (mm)	D in (mm)	E in (mm)	F in (mm)	Weight lb (kg)
ZSW6559	7,000 (3,170)	7/8 (22.2)	2 (50.8)	15/16 (24)	11/16 (18)	5 5/16 (135)	1/2 (12.7)	17/32 (13.5)	2.70 (1.23)
ZSW6560	15,000 (6,800)	7/8 (22.2)	2 (50.8)	15/16 (24)	11/16 (18)	5 3/8 (137)	21/32 (16.7)	3/4 (18)	2.00 (0.91)

Safe working load based upon 3:1 factor of safety.

SPLICING GRIP - ROTATING SWIVEL LINK

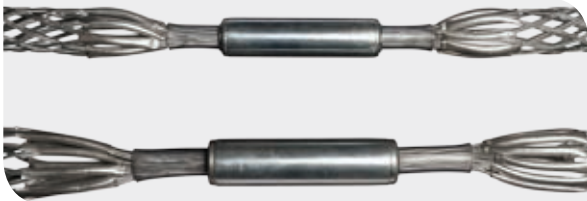


Slingco Rotating Swivel Link Grips are perfect for stringing replacement wire and cable on equipment and in drilling or rigging systems. Not recommended for use in overhead stringing applications. Use the existing cable as a pull wire to string the replacement cable. These grips are available with differently sized grips for each side. Call for assistance in selecting the proper grip. Link opens for easy installation and adjustment. Made of Galvanized Steel.

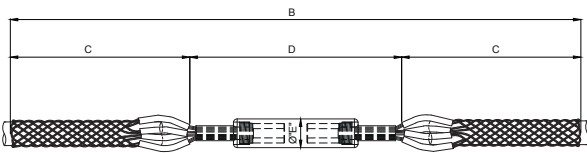


Slingco Part No	Range		B Length		C Length		D Length		E Length		F Length		Approx. Break Load	
	in	mm	in	mm	in	mm	in	mm	in	mm	in	mm	lb	kg
ZCS3493	0.25 - 0.50	6-13	100.0	2,540	44.3	1,127	11.3	288	0.87	22	1.25	32	2,400	1,089
ZCS3494	0.50 - 1.00	13-25	103.8	2,641	46.0	1,170	11.8	301	1.38	35	1.25	32	3,526	1,599
ZCS3495	1.00 - 1.50	25-38	103.0	2,614	44.9	1,140	13.1	334	1.61	41	1.61	41	5,070	2,300
ZCS3496	1.50 - 2.00	38-51	101.0	2,573	43.7	1,110	13.9	353	1.61	41	2.0	51	8,000	3,629
ZCS3497	2.00 - 2.75	51-70	100.0	2,540	42.9	1,090	13.9	353	1.61	41	2.0	51	10,000	4,530
ZCS3498	2.75 - 3.50	70-90	118.0	3,013	52.3	1,330	13.9	353	1.61	41	2.0	51	10,000	4,530
ZCS3499	3.50 - 4.25	89-108	117.0	2,973	51.6	1,310	13.9	353	1.61	41	2.0	51	10,000	4,530

SPLICING GRIP - ROTATING BARREL



Slingco Rotating Barrel Swivel grips have a high capacity swivel that travels smoothly when being strung in straight line pulling.

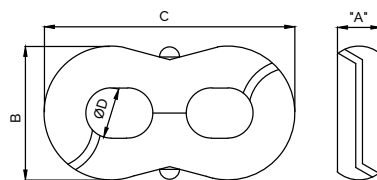


Slingco Part No	Range		B Length		C Length		D Length		Approx. Break Load	
	in	mm	in	mm	in	mm	in	mm	lb	kg
ZCS3505	0.25 - 0.50	6-13	66.1	1,680	29.7	755	6.7	170	4,400	1,964
ZCS3506	0.50 - 1.00	13-25	87.8	2,230	40.0	1,015	7.9	200	7,400	3,304
ZCS3507	1.00 - 1.50	25-38	79.9	2,030	35.2	895	9.5	240	10,000	4,530
ZCS3508	1.50 - 2.00	38-51	72.0	1,830	31.3	795	9.5	240	12,000	5,357
ZCS3509	2.00 - 2.75	51-70	85.8	2,180	37.0	940	11.8	300	16,000	7,142
ZCS3510	2.75 - 3.50	70-90	107.5	2,730	47.0	1,195	13.3	340	20,000	8,928
ZCS3511	3.50 - 4.25	89-108	104.3	2,650	44.5	1,130	15.3	390	24,000	10,714

FIGURE OF 8 'SWING LINK' CONNECTOR



Slingco Part No	A		B		C		Ø D		Approx. Break Load	
	in	mm	in	mm	in	mm	in	mm	lb	kg
SWI4281	0.50	13	1.62	41	3.25	83	0.62	16	10000	4537
SWI4282	0.75	19	2.43	62	5.00	127	0.93	24	18000	8167



MEDIUM-LIGHT CABLE GRIPS / HEAVY DUTY HOSE RESTRAINT GRIPS

DE TYPE - DOUBLE EYE CABLE GRIP



Ideal for pulling light to medium loads; the main advantage over the single eye cable grip is the cable being pulled can be passed through the grip, several cable grips can be used to support over a calculated distance. Double Eye cable grips are excellent as hose restraints for lower psi-rated hoses. A thimble eye may be custom ordered with these grips.

Slingco Part No	Range		Lattice Weave	Lattice Length		Overall Length		Approx. Break Load	
	in	mm		in	mm	in	mm	lb	kg
DOUBLE EYE STANDARD GRIP - GALVANIZED									
ZCS0305	0.25 - 0.50	10-13	Single	9	230	12	305	1,680	760
ZCS0306	0.50 - 0.75	13-19	Single	14	355	17	430	2,240	1,015
ZCS0307	0.75 - 1.00	19-25	Single	16	405	20	510	5,600	2,540
ZCS0308	1.00 - 1.50	25-38	Single	18	455	24	610	7,840	3,555
ZCS0309	1.50 - 2.00	38-50	Double	21	535	29	735	11,200	5,080
ZCS0310	2.00 - 2.50	50-63	Double	24	610	34	865	11,200	5,080
ZCS0311	2.50 - 3.50	63-89	Double	27	685	39	990	13,440	6,095
ZCS0312	3.50 - 4.50	89-115	Double	27	685	39	990	15,680	7,110
ZCS0878	4.50 - 5.50	115-140	Double	27	685	39	990	15,680	7,110
DOUBLE EYE STANDARD GRIP - 316 STAINLESS STEEL									
ZCS0823	0.25 - 0.50	10-13	Single	9	230	12	305	1,344	610
ZCS1007	0.50 - 0.75	13-19	Single	14	355	17	430	1,792	810
ZCS0931	0.75 - 1.00	19-25	Single	16	405	20	510	4,480	2,030
ZCS1265	1.00 - 1.50	25-38	Single	18	455	24	610	6,272	2,845
ZCS3995	1.14 - 1.57	29-40	Double	50	1,270	62	1,575	35,000	15,625
ZCS1252	1.50 - 2.00	38-50	Double	21	535	29	735	8,960	4,065
ZCS0319	2.00 - 2.50	50-63	Double	24	610	34	865	8,960	4,065
ZCS0213	2.50 - 3.50	63-89	Double	27	685	39	990	10,752	4,875
ZCS4873	2.50 - 3.50	63-89	Double	70	1,778	80	2,032	13,500	6,027
ZCS4596	2.50 - 3.50	63-89	Triple	56	1,422	152	3,860	16,138	7,204
ZCS0332	3.50 - 4.50	89-115	Double	27	685	39	990	12,544	5,690
ZCS1982	4.50 - 5.50	115-140	Double	27	685	39	990	12,544	5,690
ZCS4869	4.50 - 5.50	115-140	Double	70	1,778	80	2,032	13,500	6,027

HEAVY DUTY HOSE RESTRAINT GRIPS



Safety restraining system designed to prevent whipping in the event of a pressurized hose becoming detached from its fitting.

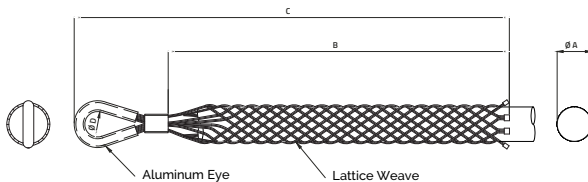
Slingco part no.		Range		Lattice Length		Lattice Weave	Approx. Break Load	
		in	mm	in	mm		lb	kg
DOUBLE THIMBLE EYE - GALVANIZED STEEL								
ZCS5363	Thimble eye	1.0 - 1.5	25 - 38	26	660	Double	11,000	4,911
ZCS5364	Thimble eye	1.5 - 2.5	38 - 63	40	1,016	Double	20,000	8,928
ZCS5365	Thimble eye	2.5 - 3.5	63 - 89	42	1,067	Double	22,000	9,821
ZCS5366	Thimble eye	3.5 - 4.5	89 - 114	44	1,118	Double	27,000	12,053
ZCS5367	Thimble eye	4.5 - 5.5	114 - 140	48	1,219	Double	31,000	13,839
ZCS6012	Thimble eye	5.5 - 7.0	140 - 180	60	1,524	Double	50,000	22,685
ZCS5529	Thimble eye	7.0 - 9.25	180 - 240	78	2,000	Triple	66,000	30,000
DOUBLE THIMBLE EYE - 316 STAINLESS STEEL								
ZCS5650	Thimble eye	1.0 - 1.5	25 - 38	26	660	Double	7,700	3,437
ZCS5651	Thimble eye	1.5 - 2.5	38 - 63	40	1,016	Double	14,000	6,250
ZCS5652	Thimble eye	2.5 - 3.5	63 - 89	42	1,067	Double	15,400	6,874
ZCS5653	Thimble eye	3.5 - 4.5	89 - 114	44	1,118	Double	18,900	8,437
ZCS5654	Thimble eye	4.5 - 5.5	114 - 140	48	1,219	Double	21,700	9,687
ZCS6000	Thimble eye	5.5 - 7.0	140 - 180	60	1,524	Double	35,000	15,880
DOUBLE EYE MULTIWEAVE - MAX STRENGTH - 316 STAINLESS STEEL								
ZCS3995	Thimble eye	1.14 - 1.57	29 - 40	50	1,270	Double	35,000	15,625
ZCS3295	Flex eye	2.75 - 3.44	70 - 87	58	1,460	Multiple	49,000	22,230
ZCS3254	Flex eye	3.00 - 3.50	76 - 89	58	1,460	Multiple	39,200	17,785
ZCS6004	Flex eye	3.50 - 4.75	89 - 120	58	1,460	Multiple	50,000	22,320
ZCS3414	Flex eye	4.75 - 5.10	120 - 130	78	1,981	Multiple	106,000	48,095

REINFORCED EYE UNDERGROUND GRIPS



This line of grips are specially designed for underground applications. The eye is enclosed in an aluminum tube which provides added support when running within conduit and trenches. Plus these underground pulling grips are made from coated airline wire for added strength and flexibility.

Now with expanded range capacity use one grip for a wider range of diameters. Plus the expanded range allows for easier installation on conductor or any cylindrical object. As with all pulling applications Slingco strongly recommends banding. See grip installation instructions on page 38.



Slingco part no.	Ø A nominal in (mm)	Range	Lattice Weave	B in (mm)	C in (mm)	Ø D Eye in (mm)	Approx. Break Load
SINGLE EYE SINGLE / DOUBLE WEAVE PVC COATED GALVANIZED - 0.25 - 0.50" (6 - 13mm)							
ZCS6355	0.37 (9.5)	0.25-0.5 (6-13)	Single	18 (457)	21.75 (552)	0.70 (18)	1500 (680)
ZCS6356	0.37 (9.5)	0.25-0.5 (6-13)	Single	24 (610)	27.75 (705)	0.70 (18)	1500 (680)
ZCS6357	0.37 (9.5mm)	0.25-0.5 (6-13)	Double (uncoated)	18 (457)	21.75 (552)	0.70 (18)	3500 (1588)
ZCS6358	0.37 (9.5)	0.25-0.5 (6-13)	Double (uncoated)	24 (610)	27.75 (705)	0.70 (18)	3500 (1588)
SINGLE EYE SINGLE / DOUBLE / TRIPLE WEAVE PVC COATED GALVANIZED - 0.50 - 0.75" (13 - 19mm)							
ZCS6359	0.63 (16)	0.50-0.75 (13-19)	Single	18 (457)	21.75 (552)	0.70 (18)	1500 (680)
ZCS6360	0.63 (16)	0.50-0.75 (13-19)	Single	24 (610)	27.75 (705)	0.70 (18)	1500 (680)
ZCS6361	0.63 (16)	0.50-0.75 (13-19)	Double (uncoated)	18 (457)	21.75 (552)	0.70 (18)	4000 (1814)
ZCS6362	0.63 (16)	0.50-0.75 (13-19)	Double (uncoated)	24 (610)	27.75 (705)	0.70 (18)	4000 (1814)
ZCS6363	0.63 (16)	0.50-0.75 (13-19)	Triple	12 (305)	17 (432)	0.87 (22)	5200 (2359)
ZCS6364	0.63 (16)	0.50-0.75 (13-19)	Triple	18 (457)	23 (584)	0.87 (22)	5200 (2359)
ZCS6365	0.63 (16)	0.50-0.75 (13-19)	Triple	24 (610)	29 (737)	0.87 (22)	5200 (2359)
ZCS6366	0.63 (16)	0.50-0.75 (13-19)	Triple	36 (914)	41 (1041)	0.87 (22)	5200 (2359)
SINGLE EYE SINGLE / DOUBLE / TRIPLE WEAVE PVC COATED GALVANIZED - 0.75 - 1.25" (19-32MM)							
ZCS6367	1.0 (25)	0.75-1.25 (19-32)	Single	18 (457)	23 (584)	0.87 (22)	3000 (1361)
ZCS6368	1.0 (25)	0.75-1.25 (19-32)	Single	24 (610)	29 (737)	0.87 (22)	3000 (1361)
ZCS6369	1.0 (25)	0.75-1.25 (19-32)	Double	18 (457)	23 (584)	0.87 (22)	6000 (2722)
ZCS6370	1.0 (25)	0.75-1.25 (19-32)	Double	24 (610)	29 (737)	0.87 (22)	6000 (2722)
ZCS6371	1.0 (25)	0.75-1.25 (19-32)	Triple	18 (457)	23 (584)	0.87 (22)	7500 (3402)
ZCS6372	1.0 (25)	0.75-1.25 (19-32)	Triple	24 (610)	29 (737)	0.87 (22)	10000 (4537)
SINGLE EYE TRIPLE WEAVE PVC COATED GALVANIZED - 1.25 - 4.88" (32 - 124MM)							
ZCS6373	1.61 (41)	1.25-2.0 (32-51)	Triple	26 (660)	31 (787)	1.42 (36)	7500 (3402)
ZCS6374	1.61 (41)	1.25-2.0 (32-51)	Triple	32 (813)	37 (940)	1.42 (36)	10500 (4764)
ZCS6375	2.37 (60)	2.0-2.75 (51-70)	Triple	32 (813)	37 (940)	1.91 (48.5)	10500 (4764)
ZCS6376	2.37 (60)	2.0-2.75 (51-70)	Triple	38 (965)	44.3 (1125)	1.91 (48.5)	13500 (6125)
ZCS6377	3.12 (70)	2.75-3.5 (70-89)	Triple	38 (965)	44.3 (1125)	1.91 (48.5)	13500 (6125)
ZCS6378	3.12 (70)	2.75-3.5 (70-89)	Triple	46 (1168)	52.3 (1328)	1.91 (48.5)	16500 (7486)
ZCS6379	3.87 (99)	3.5-4.25 (89-108)	Triple	46 (1168)	52.3 (1328)	1.91 (48.5)	16500 (7486)
ZCS6380	3.87 (99)	3.5-4.25 (89-108)	Triple	52 (1321)	58.3 (1481)	1.91 (48.5)	19500 (8847)
ZCS6381	4.56 (116)	4.25-4.87 (108-124)	Triple	52 (1321)	58.3 (1481)	1.91 (48.5)	18000 (8167)
ZCS6382	4.56 (116)	4.25-4.87 (108-124)	Triple	58 (1473)	64.3 (1633)	1.91 (48.5)	19500 (8847)

Lengths B and C when on nominal mandrel ØA +/- 5%

NON-METALLIC (ARAMID) CABLE GRIPS

SLINGCO NON-METALLIC ARAMID CABLE GRIPS FOR PULLING CABLE IN MANY INDUSTRIAL & COMMERCIAL PROJECTS



- Slingco's Non-Metallic Aramid Cable Grip Features:**
- Break loads similar to steel cable grips
 - Lightweight
 - No more frayed grip wires
 - UV Resistant and strong enough to last in salt water, pollutants, and underground
 - We can create custom grips to meet your specifications

Slingco's line of Non-Metallic Aramid Cable Grips are ideal for use in fiber optic cable installation operations, offshore applications, or for a multitude of uses in the utilities industry.

These grips are made of a high-strength, non-metallic aramid fiber, with UV protective coating, and now feature an improved weight to break ratio. They are suitable for pulling both single cable and multiple cable bundles.

Thanks to the non-metallic material, these grips are easy to work with even without gloves. The woven mesh material also offers

a non-metallic, non-conductive alternative to steel grips.

We have many different styles of Non-Metallic Aramid Cable Grips for your project, such as Single Eye, Double Eye, Offset Eye, Lace Up, Mining Grips, and our new Single Eye Double Weave Grips made of ultra flex aramid material. We can also work with you to customize an Aramid Cable Grip to match any particular project specifications.

Call your Slingco Account Manager today and they will help you select the right grip for your project!

NS TYPE - SINGLE EYE ARAMID CABLE GRIP



Single Eye Single Weave Non-Metallic Cable Grip



Single Eye Double Weave Non-Metallic Cable Grip

Slingco Part No	Range		Lattice Length		Approx. Break Load	
	in	mm	in	mm	lb	kg
SINGLE EYE SINGLE WEAVE NON-METALLIC CABLE GRIP						
ZCS1040	0.38 - 0.75	10 - 20	24	600	2,460	1,115
ZCS1022	0.75 - 1.25	20 - 30	24	600	3,580	1,620
ZCS2923	1.00 - 1.50	25 - 36	24	600	3,580	1,620
ZCS1041	1.25 - 1.50	30 - 40	24	600	4,920	2,230
ZCS1042	1.50 - 2.00	40 - 50	24	600	5,820	2,640
SINGLE EYE DOUBLE WEAVE NON-METALLIC CABLE GRIP						
ZCS1023	1.25 - 1.50	30 - 40	24	600	9,860	4,470
ZCS1024	1.50 - 2.00	40 - 50	24	600	11,880	5,390
ZCS1179	2.00 - 2.50	50 - 65	24	600	15,900	7,210
ZCS1180	2.50 - 3.00	65 - 76	24	600	15,900	7,210
ZCS1181	3.00 - 4.00	76 - 100	24	600	15,900	7,210
ZCS4079	4.00 - 5.00	102 - 127	120	3,048	15,900	7,210
Slingco Part No	Range		Color code		Approx. Break Load	
	in	mm			lb	kg
ULTRA-FLEX SINGLE EYE DOUBLE WEAVE NON-METALLIC CABLE GRIP						
ZCS09336	0.63 - 0.75	16 - 19	Yellow		5,000	2,267
ZCS09337	0.75 - 1.00	19 - 25	Red		6,000	2,721
ZCS09338	1.00 - 1.25	25 - 31	Blue		6,000	2,721
ZCS09339	1.25 - 1.50	31 - 38	White		6,000	2,721

ND TYPE - DOUBLE EYE ARAMID CABLE GRIP



Slingco Part No	Range		Lattice Length		Approx. Break Load	
	in	mm	in	mm	lb	kg
DOUBLE EYE SINGLE WEAVE NON-METALLIC GRIP						
ZCS1148	0.38 - 0.75	10 - 20	24	600	2,460	1,115
ZCS1176	0.75 - 1.25	20 - 30	24	600	3,580	1,620
ZCS2922	1.00 - 1.50	25 - 36	24	600	3,580	1,620
ZCS1177	1.25 - 1.50	30 - 40	24	600	4,920	2,230
ZCS1178	1.50 - 2.00	40 - 50	24	600	5,820	2,640
DOUBLE EYE DOUBLE WEAVE NON-METALLIC GRIP						
ZCS1182	1.25 - 1.50	30 - 40	24	600	9,860	4,470
ZCS1183	1.50 - 2.00	40 - 50	24	600	11,880	5,390
ZCS1184	2.00 - 2.50	50 - 65	24	600	15,900	7,210
ZCS1185	2.50 - 3.00	65 - 76	24	600	15,900	7,210
ZCS1186	3.00 - 4.00	76 - 100	24	600	15,900	7,210
ZCS3813	4.00 - 5.00	102 - 127	60.6	1,540	15,900	7,210

NO TYPE - OFFSET EYE ARAMID CABLE GRIP



Single Offset Eye Single Weave Non-Metallic Grip

Slingco Part No	Range		Lattice Length		Approx. Break Load	
	in	mm	in	mm	lb	kg
SINGLE OFFSET EYE SINGLE WEAVE NON-METALLIC GRIP						
ZCS2810	0.38 - 0.75	10 - 20	24	600	2,460	1,115
ZCS2811	0.75 - 1.25	20 - 30	24	600	3,580	1,620
ZCS2921	1.00 - 1.50	25 - 36	24	600	3,580	1,620
ZCS2812	1.25 - 1.50	30 - 40	24	600	4,920	2,230
ZCS2813	1.50 - 2.00	40 - 50	24	600	5,820	2,640
SINGLE OFFSET EYE DOUBLE WEAVE NON-METALLIC GRIP						
ZCS09342	0.50 - 1.00	13 - 25	39	990	8,093	3,671
ZCS2814	1.25 - 1.50	30 - 40	24	600	9,860	4,470
ZCS2815	1.50 - 2.00	40 - 50	24	600	11,880	5,390
ZCS2816	2.00 - 2.50	50 - 65	24	600	15,900	7,210
ZCS6005	2.50 - 3.00	64 - 76	39	990	15,000	6,696
ZCS9000	2.50 - 3.00	64 - 76	30	762	5,000	2,268
ZCS2817	2.50 - 3.00	64 - 76	24	600	15,900	7,210
ZCS2818	3.00 - 4.00	76 - 100	24	600	15,900	7,210
ZCS6006	3.00 - 4.00	76 - 100	24	610	15,000	6,696
ZCS6007	4.00 - 5.00	102 - 127	24	610	15,000	6,696
SINGLE OFFSET EYE LACE UP NON-METALLIC CABLE GRIP						
ZCS09323	0.62 - 1.00	15 - 25	59	1498	13,000	5,896
DOUBLE OFFSET EYE NON-METALLIC CABLE GRIP						
ZCS8176	2.50 - 3.00	64 - 76	39	990	8,000	3,629
ZCS09959	2.50 - 3.50	64 - 89	36	914	9,000	4,083
ZCS6823	3.00 - 4.00	76 - 101	33	838	9,000	4,082



Single Offset Eye Lace Up Non-Metallic Cable Grip



Double Offset Eye Non-Metallic Cable Grip



CABLE SUPPORT GRIPS

SINGLE EYE CLOSED MESH CABLE SUPPORT GRIP

Slingco closed mesh support grip in 304 Stainless Steel. Closed mesh for when end of cable is available.



Slingco Part No	Range		Lattice Length		Approx. Break Load	
	in	mm	in	mm	lb	kg
ZCS1893	0.50 - 0.63	12 - 16	9.7	247	567	255
ZCS1894	0.63 - 0.75	16 - 19	9.7	247	890	400
ZCS1895	0.75 - 1.00	19 - 25	13	331	1,040	470
ZCS1896	1.00 - 1.25	25 - 31	13.5	344	1,700	770
ZCS1897	1.25 - 1.50	31 - 38	15	382	1,700	770
ZCS1898	1.50 - 1.75	38 - 44	16.5	420	1,700	770
ZCS1899	1.75 - 2.00	44 - 50	20	509	2,300	1,040
ZCS1900	2.00 - 2.50	50 - 63	21	535	3,400	1,540
ZCS1901	2.50 - 3.00	63 - 76	24	611	3,400	1,540
ZCS1902	3.00 - 3.50	76 - 89	26	662	5,000	2,265
ZCS1903	3.50 - 4.00	89 - 102	29	738	5,000	2,265
ZCS5032	3.50 - 4.50	89 - 114	46	1,168	5,000	2,265

SINGLE EYE SPLIT MESH LACE CLOSING CABLE SUPPORT GRIP

In 304 stainless steel. Split mesh is for when end of cable is not available.



Slingco Part No	Range		Lattice Length		Approx. Break Load	
	in	mm	in	mm	lb	kg
ZCS1904	0.50 - 0.63	12 - 16	9.7	247	567	255
ZCS1905	0.63 - 0.75	16 - 19	9.7	247	890	400
ZCS1906	0.75 - 1.00	19 - 25	13	331	1,040	470
ZCS1907	1.00 - 1.25	25 - 31	13.5	344	1,700	770
ZCS1908	1.25 - 1.50	31 - 38	15	382	1,700	770
ZCS1909	1.50 - 1.75	38 - 44	16.5	420	1,700	770
ZCS1910	1.75 - 2.00	44 - 50	20	509	2,300	1,040
ZCS1911	2.00 - 2.50	50 - 63	21	535	3,400	1,540
ZCS1912	2.50 - 3.00	63 - 76	24	611	3,400	1,540
ZCS1913	3.00 - 3.50	76 - 89	26	662	5,000	2,265
ZCS1914	3.50 - 4.00	89 - 102	29	738	5,000	2,265

SINGLE EYE SPLIT MESH ROD CLOSING CABLE SUPPORT GRIP

Similar to the lace up grip, in 304 Stainless Steel, but in this design it is closed by inserting a metal rod down the length of the grip. For when end of cable is not available.



Slingco Part No	Range		Lattice Length		Approx. Break Load	
	in	mm	in	mm	lb	kg
ZCS2362	0.50 - 0.63	12 - 16	9.7	247	567	255
ZCS2363	0.63 - 0.75	16 - 19	9.7	247	890	400
ZCS2162	0.75 - 1.00	19 - 25	13	331	1,040	470
ZCS2163	1.00 - 1.25	25 - 31	13.5	344	1,700	770
ZCS2164	1.25 - 1.50	31 - 38	15	382	1,700	770
ZCS2165	1.50 - 1.75	38 - 44	16.5	420	1,700	770
ZCS2166	1.75 - 2.00	44 - 50	20	509	2,300	1,040
ZCS2167	2.00 - 2.50	50 - 63	21	535	3,400	1,540
ZCS2168	2.50 - 3.00	63 - 76	24	611	3,400	1,540
ZCS2169	3.00 - 3.50	76 - 89	26	662	5,000	2,265
ZCS2372	3.50 - 4.00	89 - 102	29	738	5,000	2,265

DOUBLE EYE CLOSED MESH CABLE SUPPORT GRIP

Double eye closed mesh support grip in 304 stainless steel. Two eyes for two connect/support points. Closed mesh for when end of cable is available.



Slingco Part No	Range		Lattice Length		Approx. Break Load	
	in	mm	in	mm	lb	kg
ZCS2038	0.50 - 0.63	12 - 16	9.7	247	512	230
ZCS2039	0.63 - .0.75	16 - 19	9.7	247	740	335
ZCS2040	0.75 - 1.00	19 - 25	13	331	1,000	450
ZCS2041	1.00 - 1.25	25 - 31	15	344	1,540	695
ZCS2042	1.25 - 1.50	31 - 38	16.5	382	1,540	695
ZCS2043	1.50 - 1.75	38- -44	20	420	2,010	910
ZCS2044	1.75 - 2.00	44 - 50	21	509	3,230	1,465
ZCS2045	2.00 - 2.50	50 - 63	24	535	3,230	1,465
ZCS2046	2.50 - 3.00	63 - 76	26	611	4,000	1,815
ZCS2047	3.00 - 3.50	76 - 89	29	662	4,000	1,815
ZCS2048	3.50 - 4.00	89 - 102	29	738	4,001	1,815
ZCS6404	4.00 - 4.50	102-114	30	762	4,000	1,815
ZCS6405	4.50 - 5.00	114-127	30	762	4,000	1,815
ZCS6406	5.00 - 5.50	127-140	30	762	4,000	1,815

DOUBLE EYE SPLIT MESH LACE CLOSING CABLE SUPPORT GRIP

Double eye split mesh lace closing, in 304 Stainless Steel, for secure attachment and support where the cable end is not accessible.



Slingco Part No	Range		Lattice Length		Approx. Break Load	
	in	mm	in	mm	lb	kg
ZCS2998	0.50 - 0.63	12 - 16	10	254	530	240
ZCS2999	0.63 - .0.75	16 - 19	10	254	790	360
ZCS3000	0.75 - 1.00	19 - 25	13	330	1,020	460
ZCS3001	1.00 - 1.25	25 - 31	14	355	1,610	730
ZCS3002	1.25 - 1.50	31 - 38	15	381	1,610	730
ZCS3003	1.50 - 1.75	38- -44	17	432	1,610	730
ZCS3004	1.75 - 2.00	44 - 50	19	482	2,150	975
ZCS3005	2.00 - 2.50	50 - 63	21	533	3,260	1,480
ZCS3006	2.50 - 3.00	63 - 76	23	584	3,260	1,480
ZCS3007	3.00 - 3.50	76 - 89	25	635	4,900	2,222
ZCS3008	3.50 - 4.00	89 - 102	27	685	4,900	2,222

DOUBLE EYE SPLIT MESH ROD CLOSING CABLE SUPPORT GRIP

Double eye split mesh rod closing, in 304 Stainless Steel, for secure attachment and support where the cable end is not accessible.



Slingco Part No	Range		Lattice Length		Approx. Break Load	
	in	mm	in	mm	lb	kg
ZCS3009	0.50 - 0.63	12 - 16	8.5	216	790	355
ZCS3010	0.63 - .0.75	16 - 19	8.5	216	790	355
ZCS3011	0.75 - 1.00	19 - 25	10.5	266	1,020	460
ZCS3012	1.00 - 1.25	25 - 31	12.5	317	1,610	730
ZCS3013	1.25 - 1.50	31 - 38	14.5	368	1,610	730
ZCS3014	1.50 - 1.75	38- -44	15.5	394	1,610	730
ZCS3015	1.75 - 2.00	44 - 50	16.5	419	2,150	975
ZCS3016	2.00 - 2.50	50 - 63	19.5	495	3,260	1,475
ZCS3017	2.50 - 3.00	63 - 76	21.5	546	3,260	1,475
ZCS3018	3.00 - 3.50	76 - 89	23.5	597	5,750	2,600
ZCS3019	3.50 - 4.00	89 - 102	25.5	648	5,750	2,600

CABLE SUPPORT GRIPS

OFFSET EYE CLOSED MESH CABLE SUPPORT GRIP

This offset eye grip, in 304 Stainless Steel, is designed to support cable as it hangs vertically or horizontally when the end of the cable is available.



Slingco Part No	Range		Lattice Length		Approx. Break Load	
	in	mm	in	mm	lb	kg
ZCS1915	0.50 - 0.63	12 - 16	9.7	247	512	230
ZCS1916	0.63 - 0.75	16 - 19	9.7	247	740	335
ZCS1917	0.75 - 1.00	19 - 25	13	331	1,000	450
ZCS1918	1.00 - 1.25	25 - 31	13.5	344	1,540	695
ZCS1919	1.25 - 1.50	31 - 38	15	382	1,540	695
ZCS1920	1.50 - 1.75	38 - 44	16.5	420	1,540	910
ZCS1921	1.75 - 2.00	44 - 50	20	509	2,010	1,465
ZCS1922	2.00 - 2.50	50 - 63	21	535	3,230	1,465
ZCS1923	2.50 - 3.00	63 - 76	24	611	3,230	1,815
ZCS1924	3.00 - 3.50	76 - 89	26	662	4,000	1,815
ZCS1925	3.50 - 4.00	89 - 102	29	738	4,000	1,815
ZCS6408	4.00 - 4.50	102-114	28	711	4,000	1,815
ZCS6409	4.50 - 5.00	114-127	28	711	4,000	1,815
ZCS6410	5.00 - 5.50	127-140	28	711	4,000	1,815

OFFSET EYE SPLIT MESH LACE CLOSING CABLE SUPPORT GRIP

This grip, in 304 Stainless Steel, is ideal for several support points along the same cable when the cable ends are not accessible.



Slingco Part No	Range		Lattice Length		Approx. Break Load	
	in	mm	in	mm	lb	kg
ZCS1926	0.50 - 0.63	12 - 16	10	254	500	225
ZCS1927	0.63 - 0.75	16 - 19	10	254	750	340
ZCS1928	0.75 - 1.00	19 - 25	13	330	950	430
ZCS1929	1.00 - 1.25	25 - 31	14	355	1,500	680
ZCS1930	1.25 - 1.50	31 - 38	15	381	1,500	680
ZCS1931	1.50 - 1.75	38 - 44	17	432	1,500	680
ZCS1932	1.75 - 2.00	44 - 50	19	482	2,000	905
ZCS1933	2.00 - 2.50	50 - 63	21	533	2,150	975
ZCS1934	2.50 - 3.00	63 - 76	23	584	2,150	975
ZCS1935	3.00 - 3.50	76 - 89	25	635	3,800	1,720
ZCS1936	3.50 - 4.00	89 - 102	27	685	3,800	1,720

OFFSET EYE SPLIT MESH ROD CLOSING CABLE SUPPORT GRIP

Ideal for several support points along the same cable when the cable ends are not accessible. Made from 304 Stainless Steel.



Slingco Part No	Range		Lattice Length		Approx. Break Load	
	in	mm	in	mm	lb	kg
ZCS3031	0.50 - 0.63	12 - 16	7	178	500	225
ZCS3032	0.63 - 0.75	16 - 19	9	229	750	340
ZCS3033	0.75 - 1.00	19 - 25	10	254	950	430
ZCS3034	1.00 - 1.25	25 - 31	12	305	1,500	680
ZCS3035	1.25 - 1.50	31 - 38	14	359	1,500	680
ZCS3036	1.50 - 1.75	38 - 44	15	381	1,500	680
ZCS3037	1.75 - 2.00	44 - 50	16	406	2,000	905
ZCS3038	2.00 - 2.50	50 - 63	19	483	3,100	975
ZCS3039	2.50 - 3.00	63 - 76	20	508	3,100	975
ZCS3040	3.00 - 3.50	76 - 89	21	533	4,300	1,720
ZCS3041	3.50 - 4.00	89 - 102	21	533	4,900	1,720

UNIVERSAL EYE CLOSED MESH CABLE SUPPORT GRIP

Fitted with an adjustable eye for easy and secure attachment, where the end of the cable can be inserted in to the support grip. Made from 304 Stainless Steel.



Slingco Part No	Range		Lattice Length		Approx. Break Load	
	in	mm	in	mm	lb	kg
ZCS2664	0.50 - 0.63	12 - 16	10	254	530	240
ZCS4272	0.58 - 0.68	14.7 - 17.3	12	305	1,050	469
ZCS2665	0.63 - 0.75	16 - 19	10	254	790	360
ZCS2666	0.75 - 1.00	19 - 25	13	330	1,020	460
ZCS4273	0.75 - 0.87	19 - 22.1	13	330	1,390	620
ZCS4274	0.87 - 1.00	22.1 - 25	14	355	1,790	799
ZCS2667	1.00 - 1.25	25 - 31	14	355	1,610	730
ZCS2324	1.25 - 1.50	31 - 38	15	381	1,610	730
ZCS2668	1.50 - 1.75	38 - 44	17	432	1,610	730
ZCS2669	1.75 - 2.00	44 - 50	19	483	2,150	975
ZCS2670	2.00 - 2.50	50 - 63	21	533	3,260	1,480
ZCS2671	2.50 - 3.00	63 - 76	23	584	3,260	1,480

UNIVERSAL EYE SPLIT MESH LACE CLOSING CABLE SUPPORT GRIP

Fitted with an adjustable eye for easy and secure attachment, where the end of the cable is not accessible. Made from 304 Stainless Steel.



Slingco Part No	Range		Lattice Length		Approx. Break Load	
	in	mm	in	mm	lb	kg
ZCS2672	0.50 - 0.63	12 - 16	10	254	530	240
ZCS2673	0.63 - 0.75	16 - 19	10	254	790	360
ZCS2674	0.75 - 1.00	19 - 25	13	330	1,020	460
ZCS2675	1.00 - 1.25	25 - 31	14	355	1,610	730
ZCS2676	1.25 - 1.50	31 - 38	15	381	1,610	730
ZCS2677	1.50 - 1.75	38 - 44	17	432	1,610	730
ZCS2678	1.75 - 2.00	44 - 50	19	483	2,150	975
ZCS2679	2.00 - 2.50	50 - 63	21	533	3,260	1,480
ZCS2680	2.50 - 3.00	63 - 76	23	584	3,280	1,480
ZCS2681	3.00 - 3.50	76 - 89	25	635	4,900	2,222
ZCS2682	3.50 - 4.00	89 - 102	27	686	4,900	2,222

UNIVERSAL EYE SPLIT MESH ROD CLOSING CABLE SUPPORT GRIP

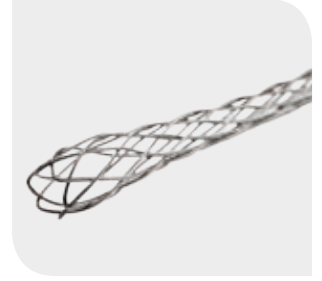
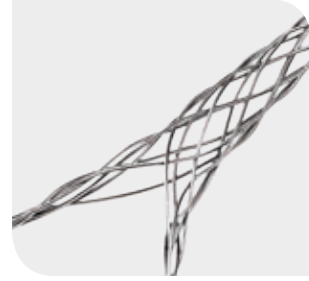
Fitted with an adjustable eye for easy and secure attachment, where the end of the cable is not accessible. Made from 304 Stainless Steel.



Slingco Part No	Range		Lattice Length		Approx. Break Load	
	in	mm	in	mm	lbs	kg
ZCS2683	0.50 - 0.63	12 - 16	8.5	216	530	240
ZCS2684	0.63 - 0.75	16 - 19	8.5	216	790	360
ZCS2685	0.75 - 1.00	19 - 25	10.5	267	1,020	460
ZCS2686	1.00 - 1.25	25 - 31	12.5	317	1,610	730
ZCS2687	1.25 - 1.50	31 - 38	14.5	368	1,610	730
ZCS2688	1.50 - 1.75	38 - 44	15.5	394	1,610	730

CABLE SUPPORT GRIPS

Heavy Duty support grips made from stainless steel are perfect for supporting heavier cable, conduit or any other cylindrical object. Often used by Utilities and Contractors to support cables transitioning from overhead to underground. One may support multiple cables in one grip. The overall diameter of the cable bundle should fit within the listed range.



HEAVY DUTY SUPPORT GRIPS - SINGLE EYE

Slingco Part No	Range		Approx. Break Load	
	in	mm	lb	kg
ZCS7065	0.50 - 0.63	13 - 16	1,370	621
ZCS7066	0.63 - 0.75	16 - 19	2,060	944
ZCS7067	0.75 - 1.00	19 - 25	2,060	944
ZCS7068	1.00 - 1.25	25 - 32	2,678	1,216
ZCS7069	1.25 - 1.50	32 - 38	4,490	2,037
ZCS7070	1.50 - 1.75	38 - 44	4,490	2,037
ZCS7071	1.75 - 2.00	44 - 51	5,000	2,269
ZCS7072	2.00 - 2.50	51 - 63	8,940	4,056
ZCS7073	2.50 - 3.00	63 - 76	8,940	4,056
ZCS7074	3.00 - 3.50	76 - 87	13,420	6,089
ZCS7075	3.50 - 4.00	87 - 102	13,420	6,089

HEAVY DUTY SUPPORT GRIPS - DOUBLE EYE

Slingco Part No	Range		Approx. Break Load	
	in	mm	lb	kg
ZCS3057	0.50 - 0.63	13 - 16	1,370	621
ZCS3058	0.63 - 0.75	16 - 19	2,080	944
ZCS3059	0.75 - 1.00	19 - 25	2,080	944
ZCS3060	1.00 - 1.25	25 - 31	2,870	1,302
ZCS3061	1.25 - 1.50	31 - 38	4,490	2,037
ZCS3062	1.50 - 1.75	38 - 44	4,490	2,037
ZCS3063	1.75 - 2.00	44 - 50	5,000	2,268
ZCS3064	2.00 - 2.50	50 - 63	8,940	4,056
ZCS3065	2.50 - 3.00	63 - 76	8,940	4,056
ZCS3066	3.00 - 3.50	76 - 89	12,000	5,445
ZCS3067	3.50 - 4.00	89 - 102	12,000	5,445

HEAVY DUTY SUPPORT GRIPS - SINGLE EYE LACE-UP

Slingco Part No	Range		Approx. Break Load	
	in	mm	lb	kg
ZCS6907	0.50 - 0.63	13 - 16	1,370	621
ZCS6908	0.63 - 0.75	16 - 19	2,080	944
ZCS6909	0.75 - 1.00	19 - 25	2,080	944
ZCS6910	1.00 - 1.25	25 - 32	2,670	1,211
ZCS6911	1.25 - 1.50	32 - 38	4,490	2,037
ZCS6912	1.50 - 1.75	38 - 44	4,490	2,037
ZCS6913	1.75 - 2.00	44 - 51	5,000	2,269
ZCS6914	2.00 - 2.50	51 - 63	8,940	4,056
ZCS6915	2.50 - 3.00	63 - 76	8,940	4,056
ZCS6916	3.00 - 3.50	76 - 87	13,420	6,089
ZCS6917	3.50 - 4.00	87 - 102	13,420	6,089

HEAVY DUTY SUPPORT GRIPS - DOUBLE EYE LACE-UP

Slingco Part No	Range		Approx. Break Load	
	in	mm	lb	kg
ZCS7087	0.50 - 0.63	13 - 16	1,370	621
ZCS7088	0.63 - 0.75	16 - 19	2,080	944
ZCS7089	0.75 - 1.00	19 - 25	2,080	944
ZCS7090	1.00 - 1.25	25 - 32	2,670	1,211
ZCS7091	1.25 - 1.50	32 - 38	4,490	2,037
ZCS7092	1.50 - 1.75	38 - 44	4,490	2,037
ZCS7093	1.75 - 2.00	44 - 51	5,000	2,269
ZCS7094	2.00 - 2.50	51 - 63	8,940	4,056
ZCS7095	2.50 - 3.00	63 - 76	8,940	4,056
ZCS7096	3.00 - 3.50	76 - 87	13,420	6,089
ZCS7097	3.50 - 4.00	87 - 102	13,420	6,089

HEAVY DUTY SUPPORT GRIPS - SINGLE EYE ROD CLOSING

Slingco Part No	Range		Approx. Break Load	
	in	mm	lb	kg
ZCS7076	0.50 - 0.63	13 - 16	1370	621
ZCS7077	0.63 - 0.75	16 - 19	2080	944
ZCS7078	0.75 - 1.00	19 - 25	2080	944
ZCS7079	1.00 - 1.25	25 - 32	2670	1211
ZCS7080	1.25 - 1.50	32 - 38	4490	2037
ZCS7081	1.50 - 1.75	38 - 44	4490	2037
ZCS7082	1.75 - 2.00	44 - 51	5000	2269
ZCS7083	2.00 - 2.50	51 - 63	8940	4056
ZCS7084	2.50 - 3.00	63 - 76	8940	4056
ZCS7085	3.00 - 3.50	76 - 87	13420	6089
ZCS7086	3.50 - 4.00	87 - 102	13420	6089

HEAVY DUTY SUPPORT GRIPS - DOUBLE EYE ROD CLOSING

Slingco Part No	Range		Approx. Break Load	
	in	mm	lb	kg
ZCS7098	0.50 - 0.63	13 - 16	1,370	621
ZCS7099	0.63 - 0.75	16 - 19	2,080	944
ZCS7100	0.75 - 1.00	19 - 25	2,080	944
ZCS7101	1.00 - 1.25	25 - 32	2,670	1,211
ZCS7102	1.25 - 1.50	32 - 38	4,490	2,037
ZCS7103	1.50 - 1.75	38 - 44	4,490	2,037
ZCS7104	1.75 - 2.00	44 - 51	5,000	2,269
ZCS7105	2.00 - 2.50	51 - 63	8,940	4,056
ZCS7106	2.50 - 3.00	63 - 76	8,940	4,056
ZCS7107	3.00 - 3.50	76 - 87	13,420	6,089
ZCS7108	3.50 - 4.00	87 - 102	13,420	6,089

BUS DROP GRIPS



Lightweight easy to use Bus Drop Grips are perfect for supporting cables in such applications as Data Centers, Control Centers and other wiring to rack applications.

Slingco Part No	Range		Eye length		Approx. Break Load	
	in	mm	in	mm	lb	kg
ZCS6969	0.24 - 0.32	6.1 - 8.1	3.5	88.9	350	158
ZCS6970	0.32 - 0.43	8.1 - 10.9	4	101.6	450	204
ZCS6971	0.43 - 0.56	10.9 - 14.2	4.75	120.6	550	249
ZCS6972	0.56 - 0.73	14.2 - 18.5	6	152.4	1,000	453
ZCS6973	0.73 - 0.85	18.5 - 21.6	6.75	171.4	1,400	635
ZCS6974	0.85 - 1.00	21.6 - 25.4	8	203.2	1,400	635
ZCS6975	1.00 - 1.25	25.4 - 31.7	9.5	241.3	1,500	680

SERVICE DROP GRIPS



Use these grips to support cables in manufacturing, industrial and open space environments. The extended eye allows for easy installation and hanging from conveniently placed connection points. Also great for Control room and wire to rack applications.

Slingco Part No	Range		Eye length		Approx. Break Load	
	in	mm	in	mm	lb	kg
ZCS7684	0.22 - 0.32	5.6 - 8.1	9	229	1,100	499
ZCS7685	0.30 - 0.43	7.6 - 10.9	9	229	1,100	499
ZCS7686	0.41 - 0.56	10.4 - 14.2	9	229	1,100	499
ZCS7687	0.53 - 0.73	13.5 - 18.5	9	229	1,100	499
ZCS7688	0.70 - 0.85	17.8 - 21.6	9	229	1,900	861
ZCS7689	0.82 - 1.00	20.8 - 25.4	9	229	1,900	861
ZCS7690	0.96 - 1.25	24.4 - 31.7	7	178	1,900	861

JIB HEAD ADAPTER



- For mounting Jib head attachments and assemblies
- Manufactured from zinc plated steel
- Supplied with machined pin and lanyard

Slingco Part No.	Dimensions (Square ID)		Type
	in	mm	
ZWH10911	4.1 x 4.1	104.1 x 104.1	Square to Round Adapter

CABLE SUPPORT GRIPS

CONDUIT RISER CABLE GRIP - STAINLESS STEEL



Conduit riser grips are designed to support cables within conduit. Designed to match standard conduit sizes. These grips come in single and double weave as indicated in the chart below. Also available in Split Ring design for supporting cable already installed or when the end of the cable is not available.



Call 888-685-9478 for additional sizes and styles.

Slingco comparison reference numbers and Approximate breaking strengths (lbs)

Conduit size inches	Cable sizes diameter inches																			
	0.50 - 0.63	0.63 - 0.75	0.75 - 1.00	1.00 - 1.25	1.25 - 1.50	1.50 - 1.75	1.75 - 2.00	2.0 - 2.5	2.0 - 3.0	2.5 - 3.0	2.5 - 3.5	3.5 - 4.0	3.5 - 4.0	3.0 - 3.5	3.5 - 4.5	3.5 - 4.0	4.0 - 4.5	4.5 - 5.0	4.5 - 5.0	4.5 - 5.0
	Length inches																			
	8	9	11	12	12	14	15	17	17	18	19	18	21	20	20	21	21	24	27	27
0.75	ZCS2690 530																			
1	ZCS2691 490	ZCS2694 790																		
1.25	ZCS2692 450	ZCS2695 740	ZCS2698 1,030																	
1.5		ZCS2696 690	ZCS2699 970	ZCS2701 1,610																
2	ZCS2693 370	ZCS2697 640	ZCS2700 920	ZCS2702 1,520	ZCS2704 1,610															
2.5					ZCS2705 1,510	ZCS2707 1,610	ZCS2708 2,150													
3				ZCS2703 1,340	ZCS2706 1,400	ZCS2709 1,490	ZCS2710 1,990	ZCS2711 3,260												
3.5								ZCS2714 2,970		ZCS2716 3,260										
4							ZCS2712 1,670	ZCS2713 2,680		ZCS2715 2,890					ZCS2717 4,080					
4											Split Rod ZCS4282 4,080									
5									ZCS5645* 2,150	ZCS2719 2,150		ZCS5646* 3,130	ZCS5085 3,130	ZCS2721 2,860		ZCS2723 3,130				
6														ZCS2722 2,240	ZCS5647 2,240	ZCS2724 2,240	ZCS4755 2,240	ZCS4276 2,245	ZCS3259 4,995	ZCS4284 4,995

*Indicates Double Weave

HOOKED EYE CONDUIT SUPPORT CABLE SUPPORT GRIP

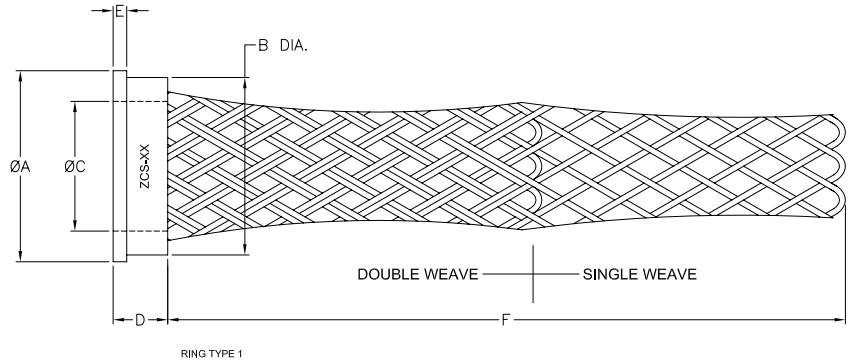
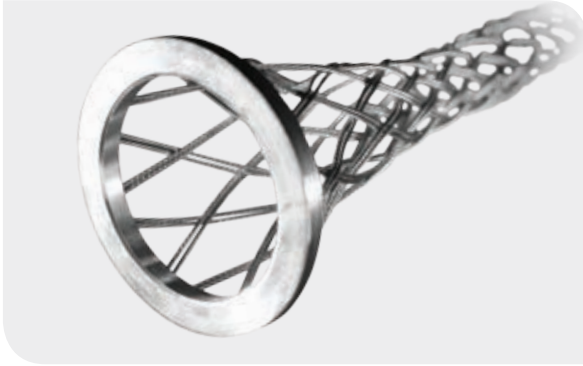


Heavy duty stainless steel grip for outdoor riser pole applications.

Slingco Part No	Range		Lattice Weave	Lattice Length		Approx. Break Load	
	in	mm		in	mm	lb	kg
ZCS5430	2.25 - 2.75	57 - 70	Double	21	533	2,000	910
ZCS5268	3.25 - 3.75	82 - 95	Double	21	533	6,500	2,902
ZCS5062	3.50 - 4.25	89 - 108	Double	21	533	6,500	2,902
ZCS4301	4.0 - 4.50	102 - 114	Double	21	533	6,000	2,678

STAINLESS STEEL CONNECTOR/BOX GRIP

Dual Weave – these grips are designed with a ring to support electric cabling from termination point to reduce strain on the connections. 304 stainless steel.



Slingco part no.	Cable dia min inches (mm)	Cable dia max inches (mm)	Ø A inches (mm)	B inches (mm)	Ø C inches (mm)	D inches (mm)	E inches (mm)	F inches (mm)	Approx. breaking strength lb (kg)
ZCS2208	0.2 (5.1)	0.25 (6.4)	1.25 (31.8)	1.12 (28.4)	0.31 (7.9)	0.281 (7.1)	0.125 (3.2)	3 (76)	500 (225)
ZCS2209	0.31 (7.9)	0.375 (9.5)	1.25 (31.8)	1.12 (28.4)	0.437 (11.1)	0.281 (7.1)	0.125 (3.2)	4 (102)	750 (340)
ZCS2210	0.41 (10.4)	0.5 (12.7)	1.25 (31.8)	1.12 (28.4)	0.562 (14.3)	0.281 (7.1)	0.125 (3.2)	5 (127)	750 (340)
ZCS2211	0.5 (12.7)	0.625 (15.9)	1.25 (31.8)	1.12 (28.4)	0.687 (17.4)	0.281 (7.1)	0.125 (3.2)	6 (152)	1,200 (540)
ZCS2212	0.61 (15.5)	0.75 (19.1)	1.25 (31.8)	1.12 (28.4)	0.812 (20.6)	0.281 (7.1)	0.125 (3.2)	7 (178)	1,200 (540)
ZCS2213	0.71 (18.0)	0.875 (22.2)	1.25 (31.8)	1.12 (28.4)	0.937 (23.8)	0.281 (7.1)	0.125 (3.2)	7½ (178)	1,000 (450)
ZCS2214	0.77 (19.6)	0.937 (23.8)	1.25 (31.8)	1.12 (28.4)	0.948 (24.1)	0.219 (5.6)	-	8 (203)	800 (360)
ZCS2215	0.31 (7.9)	0.375 (9.5)	1.75 (44.5)	1.62 (41.1)	0.437 (11.1)	0.281 (7.1)	0.125 (3.2)	4 (102)	500 (225)
ZCS2216	0.41 (10.4)	0.5 (12.7)	1.75 (44.5)	1.62 (41.1)	0.562 (14.3)	0.281 (7.1)	0.125 (3.2)	5 (127)	750 (340)
ZCS2217	0.5 (12.7)	0.625 (15.9)	1.75 (44.5)	1.62 (41.1)	0.687 (17.4)	0.281 (7.1)	0.125 (3.2)	6 (152)	1,000 (450)
ZCS2218	0.61 (15.5)	0.75 (19.1)	1.75 (44.5)	1.62 (41.1)	0.812 (20.6)	0.281 (7.1)	0.125 (3.2)	7 (178)	1,000 (450)
ZCS2219	0.71 (18.0)	0.875 (22.2)	1.75 (44.5)	1.62 (41.1)	0.937 (23.8)	0.281 (7.1)	0.125 (3.2)	7½ (190)	1,000 (450)
ZCS2220	0.82 (20.8)	1 (25.4)	1.75 (44.5)	1.62 (41.1)	1.062 (27.0)	0.281 (7.1)	0.125 (3.2)	8½ (215)	1,000 (450)
ZCS2221	0.915 (23.2)	1.125 (28.6)	1.75 (44.5)	1.62 (41.1)	1.187 (30.1)	0.281 (7.1)	0.125 (3.2)	9 (229)	1,500 (680)
ZCS2222	1.02(25.9)	1.25 (31.8)	1.75 (44.5)	1.62 (41.1)	1.312 (33.3)	0.281 (7.1)	0.125 (3.2)	10 (254)	1,000 (450)
ZCS2223	1.18 (30.0)	1.437 (36.5)	1.75 (44.5)	1.62 (41.1)	1.448 (36.8)	0.219 (5.6)	-	10½ (265)	500 (225)
ZCS2224	0.5 (12.7)	0.625 (15.9)	2.25 (57.2)	2.12 (53.8)	0.687 (17.4)	0.281 (7.1)	0.125 (3.2)	6 (152)	1,000 (450)
ZCS2225	0.71 (18.0)	0.875 (22.2)	2.25 (57.2)	2.12 (53.8)	0.937 (23.8)	0.281 (7.1)	0.125 (3.2)	7½ (178)	1,000 (450)
ZCS7384	0.82 (20.8)	1.00 (25.4)	2.25 (57.2)	2.12 (53.8)	1.62 (41)	0.281 (7.1)	0.125 (3.2)	8½ (215)	1,000 (450)
ZCS2226	0.915 (23.2)	1.125 (28.6)	2.25 (57.2)	2.12 (53.8)	1.187 (30.1)	0.281 (7.1)	0.125 (3.2)	9 (229)	1,500 (680)
ZCS2227	1.02 (25.9)	1.25 (31.8)	2.25 (57.2)	2.12 (53.8)	1.312 (33.3)	0.281 (7.1)	0.125 (3.2)	10 (254)	1,800 (815)
ZCS2228	1.22 (31.0)	1.5 (38.1)	2.25 (57.2)	2.12 (53.8)	1.562 (39.7)	0.281 (7.1)	0.125 (3.2)	11 (279)	1,800 (815)
ZCS2229	1.43 (36.3)	1.75 (44.5)	2.25 (57.2)	2.12 (53.8)	1.812 (46.0)	0.281 (7.1)	0.125 (3.2)	13 (330)	700 (315)
ZCS2230	1.18 (30.0)	1.937 (49.2)	2.25 (57.2)	2.12 (53.8)	1.948 (49.5)	0.219 (5.6)	-	14½ (365)	350 (155)
ZCS2231	0.82 (20.8)	1 (25.4)	2.75 (69.9)	2.62 (66.5)	1.062 (27.0)	0.281 (7.1)	0.125 (3.2)	8½ (215)	1,000 (450)
ZCS2232	1.02 (25.9)	1.25 (31.8)	2.75 (69.9)	2.62 (66.5)	1.312 (33.3)	0.281 (7.1)	0.125 (3.2)	10 (254)	1,500 (680)
ZCS2233	1.22 (31.0)	1.5 (38.1)	2.75 (69.9)	2.62 (66.5)	1.562 (39.7)	0.281 (7.1)	0.125 (3.2)	11 (279)	1,500 (680)
ZCS2234	1.43 (36.3)	1.75 (44.5)	2.75 (69.9)	2.62 (66.5)	1.812 (46.0)	0.281 (7.1)	0.125 (3.2)	13 (330)	1,800 (815)
ZCS2235	1.64 (41.7)	2 (50.8)	2.75 (69.9)	2.62 (66.5)	2.062 (52.4)	0.281 (7.1)	0.125 (3.2)	15 (381)	1,800 (815)
ZCS2236	1.84 (46.7)	2.25 (57.2)	2.75 (69.9)	2.62 (66.5)	2.312 (58.7)	0.281 (7.1)	0.125 (3.2)	16 (406)	1,500 (680)
ZCS2237	2.062 (52.4)	2.469 (62.7)	2.75 (69.9)	2.62 (66.5)	2.489 (63.2)	0.219 (5.6)	-	17½ (444)	1,500 (680)
ZCS2238	1.375 (34.9)	1.75 (44.5)	3.25 (82.6)	3.12 (79.2)	1.812 (46.0)	0.281 (7.1)	0.125 (3.2)	13 (330)	2,000 (905)
ZCS2239	1.75 (44.5)	2 (50.8)	3.25 (82.6)	3.12 (79.2)	2.062 (52.4)	0.281 (7.1)	0.125 (3.2)	15 (381)	2,000 (905)
ZCS2240	1.84 (46.7)	2.25 (57.2)	3.25 (82.6)	3.12 (79.2)	2.312 (58.7)	0.281 (7.1)	0.125 (3.2)	16 (406)	2,000 (905)
ZCS2241	2.125 (54.0)	2.5 (63.5)	3.25 (82.6)	3.12 (79.2)	2.562 (65.1)	0.281 (7.1)	0.125 (3.2)	17½ (444)	2,000 (905)
ZCS2242	2.5 (63.5)	2.875 (73.0)	3.25 (82.6)	3.12 (79.2)	2.918 (74.1)	0.219 (5.6)	-	19 (483)	2,000 (905)

CABLE STRAIN RELIEF GRIPS

DELUXE CORD GRIPS

Deluxe Cord Grips provide strain relief and bend support for cables running into machinery and connection boxes. Select the deluxe grip that fits the NPT size being connected to. Available with Straight Male, 90 degree Male, 45 degree Male and Straight Female connections. The wire mesh grip is sized to provide bend support and pull out resistance for the cable range listed.



Range	Range		Straight Male Slingco Part No.	90° Male Slingco Part No.	45° Male Slingco Part No.	Straight Female Slingco Part No.
	in	mm				
3/8" NPT						
0.19 - 0.25	4.8 - 6.4		ZCS7713	ZCS7717		
0.25 - 0.31	6.4 - 7.9		ZCS7714	ZCS7718		
0.31 - 0.38	7.9 - 9.7		ZCS7715	ZCS7719		
0.38 - 0.50	9.7 - 12.7		ZCS7716	ZCS7720		
1/2" NPT						
0.19 - 0.25	4.8 - 6.4		ZCS7721	ZCS7727	ZCS7731	ZCS7735
0.25 - 0.38	6.4 - 9.6		ZCS7722	ZCS7728	ZCS7732	ZCS7736
0.38 - 0.50	9.7 - 12.7		ZCS7723	ZCS7729	ZCS7733	ZCS7737
0.50 - 0.63	12.7 - 16.0		ZCS7724	ZCS7730	ZCS7734	ZCS7738
0.63 - 0.75	16.0 - 19.1		ZCS7725			
0.75 - 0.88	19.1 - 22.4		ZCS7726			
3/4" NPT						
0.25 - 0.38	6.4 - 9.7		ZCS7739	ZCS7744	ZCS7748	ZCS7752
0.38 - 0.50	9.7 - 12.7		ZCS7740	ZCS7745	ZCS7749	ZCS7753
0.50 - 0.63	12.7 - 16.0		ZCS7741	ZCS7746	ZCS7750	ZCS7754
0.63 - 0.75	16.0 - 19.1		ZCS7742	ZCS7747	ZCS7751	ZCS7755
0.75 - 0.88	19.1 - 22.4		ZCS7743			
1" NPT						
0.44 - 0.56	11.2 - 14		ZCS7887	ZCS7894	ZCS7899	ZCS7904
0.56 - 0.69	14 - 17.5		ZCS7888	ZCS7895	ZCS7900	ZCS7905
0.63 - 0.75	16 - 19.1		ZCS7889	ZCS7896	ZCS7901	ZCS7906
0.75 - 0.88	19.1 - 22.4		ZCS7890	ZCS7897	ZCS7902	ZCS7907
0.88 - 1.00	22.4 - 25.4		ZCS7891	ZCS7898	ZCS7903	ZCS7908
1.00 - 1.13	25.4 - 28.7		ZCS7892			
1.13 - 1.25	28.7 - 31.8		ZCS7893			
1.25" NPT						
0.75 - 0.88	19.1 - 22.4		ZCS7909	ZCS7914		
0.88 - 1.00	22.4 - 25.4		ZCS7910	ZCS7915		
1.00 - 1.13	25.4 - 28.7		ZCS7911	ZCS7916		
1.13 - 1.25	28.7 - 31.8		ZCS7912	ZCS7917		
1.25 - 1.38	31.8 - 35.1		ZCS7913	ZCS7918		
1.5" NPT						
0.75 - 0.88	19.1 - 22.4		ZCS7919	ZCS7929		
0.88 - 1.00	22.4 - 25.4		ZCS7920	ZCS7930		
1.00 - 1.13	25.4 - 28.7		ZCS7921	ZCS7931		
1.13 - 1.25	28.7 - 31.8		ZCS7922	ZCS7932		
1.25 - 1.38	31.8 - 35.1		ZCS7923	ZCS7933		
1.31 - 1.44	33.3 - 36.6		ZCS7924			
1.44 - 1.56	36.6 - 39.6		ZCS7925			
1.56 - 1.69	39.6 - 43.0		ZCS7926			
1.69 - 1.81	43.0 - 46.0		ZCS7927			
1.75 - 1.88	44.5 - 47.8		ZCS7928			
2" NPT						
1.25 - 1.38	31.8 - 35.1		ZCS7934	ZCS7945		
1.31 - 1.44	33.3 - 36.6		ZCS7935	ZCS7946		
1.44 - 1.56	36.6 - 39.6		ZCS7936	ZCS7947		
1.56 - 1.69	39.6 - 43.0		ZCS7937	ZCS7948		
1.69 - 1.81	43.0 - 46.0		ZCS7938	ZCS7949		
1.75 - 1.88	44.5 - 47.8		ZCS7939	ZCS7950		
1.81 - 1.94	45.9 - 49.3		ZCS7940			
1.94 - 2.06	49.3 - 52.3		ZCS7941			
2.06 - 2.19	52.3 - 55.5		ZCS7942			
2.19 - 2.31	55.5 - 58.7		ZCS7943			
2.31 - 2.44	58.7 - 61.9		ZCS7944			

DELUXE CORD GRIPS (CONTINUED)



Range		Straight Male	90° Male	45° Male	Straight Female
in	mm	Slingco Part No.	Slingco Part No.	Slingco Part No.	Slingco Part No.
2.5" NPT					
1.69 - 1.81	43.0 - 46.0	ZCS7951			
1.81 - 1.94	45.9 - 49.3	ZCS7952			
1.94 - 2.06	49.3 - 52.3	ZCS7953			
2.06 - 2.19	52.3 - 55.5	ZCS7954			
2.19 - 2.31	55.5 - 58.7	ZCS7955			
2.31 - 2.44	58.7 - 31.9	ZCS7956			
3.0" NPT					
1.69 - 1.81	43.0 - 46.0	ZCS7957			
1.81 - 1.94	45.9 - 49.3	ZCS7958			
1.94 - 2.06	49.3 - 52.3	ZCS7959			
2.06 - 2.19	52.3 - 55.5	ZCS7960			
2.19 - 2.31	55.5 - 58.7	ZCS7961			
2.31 - 2.44	58.7 - 31.9	ZCS7962			
2.44 - 2.63	62.0 - 66.5	ZCS7963			
2.63 - 2.81	66.5 - 71.4	ZCS7964			
2.81 - 3.00	71.4 - 76.2	ZCS7965			
3.00 - 3.25	76.2 - 82.6	ZCS7966			

DUST-TIGHT CORD GRIPS



Dust-Tight Cord Grips provide strain relief and bend support for cables running into machinery and connection boxes. Select the deluxe grip that fits the NPT size being connected to. Available with Straight Male, 90 degree Male, 45 degree Male and Straight Female connections. The wire mesh grip is sized to provide bend support and pull out resistance for the cable range listed.

Range		NPT	Insulated	Non-insulated
in	mm	Size	Slingco Part No.	Slingco Part No.
0.22 - 0.32	5.6 - 8.1	1/2"	ZCS7674	ZCS7756
0.30 - 0.43	7.6 - 10.9	1/2"	ZCS7675	ZCS7757
0.40 - 0.54	10.1 - 13.7	1/2"	ZCS7676	ZCS7758
0.52 - 0.73	13.2 - 18.5	3/4"	ZCS7677	ZCS7759
0.70 - 0.97	17.8 - 24.6	1"	ZCS7678	ZCS7760
0.94 - 1.25	23.8 - 31.8	1.25"	ZCS7679	ZCS7761
1.20 - 1.50	30.5 - 38.1	1.5"	ZCS7680	
1.40 - 1.75	38.1 - 44.5	2"	ZCS7681	
1.62 - 2.00	41.1 - 50.8	2.5"	ZCS7682	
2.00 - 2.45	50.8 - 62.2	2.5"	ZCS7683	

CAN'T FIND THE SPECIFICATION YOU NEED?
 Call or email for full ranges plus custom manufacture options

888 685 9478
 sales@slingco.com

UNDERGROUND CABLE PULLING ACCESSORIES

REQUEST YOUR COPY OF THE SLINGCO UNDERGROUND & RIGGING CATALOG



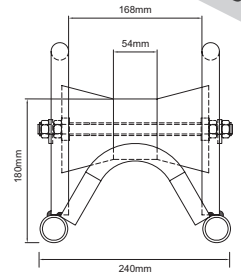
CABLE LAYING ROLLER



ZGP2395

They are of steel construction with zinc plating for general purpose cable installation work in trenches. They are suitable for power, telecoms and utility installations, and can bridge existing cables in trenches or ducts.

Slingco Part No.	Base Footprint in (mm)	Height to the top of the Roller in (mm)	Handle Height in (mm)
ZGP2395	12 x 9 1/2 (305 x 240)	7 1/8 (180)	10 (255)



Other cable laying roller configurations are also available, as shown below. Please contact us for more details.



ZGP8209



ZGP8267



ZGP8269



ZGP8268



ZGP8270



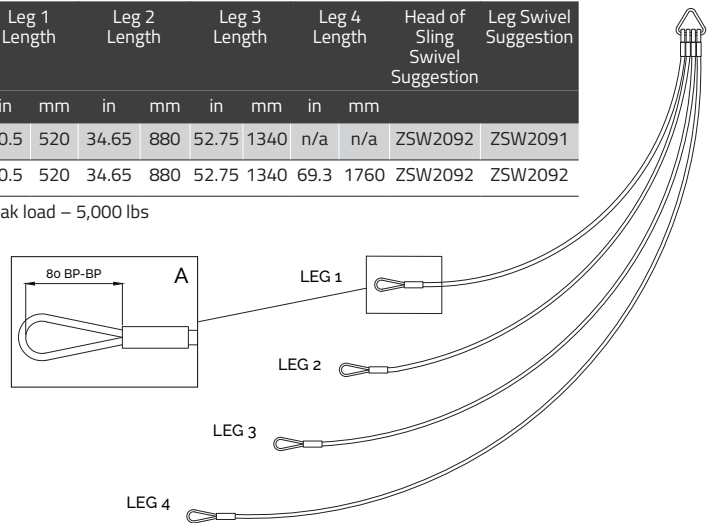
ZGP8210

TRI & QUAD PULLING SLING

This staggered pulling sling is designed to allow the pulling of multiple conductors at the same time while minimizing the overall diameter of your pulling bundle. These pulling slings come in a three leg or four leg versions. One should use a swivel for each leg and at the head of the sling to release torsion and allow the conductors to rotate freely. The suggested swivels are listed with each model.

Slingco Part No.	Leg 1 Length		Leg 2 Length		Leg 3 Length		Leg 4 Length		Head of Sling Swivel Suggestion	Leg Swivel Suggestion
	in	mm	in	mm	in	mm	in	mm		
ZSH2264	20.5	520	34.65	880	52.75	1340	n/a	n/a	ZSW2092	ZSW2091
ZSH2265	20.5	520	34.65	880	52.75	1340	69.3	1760	ZSW2092	ZSW2092

Minimum break load – 5,000 lbs

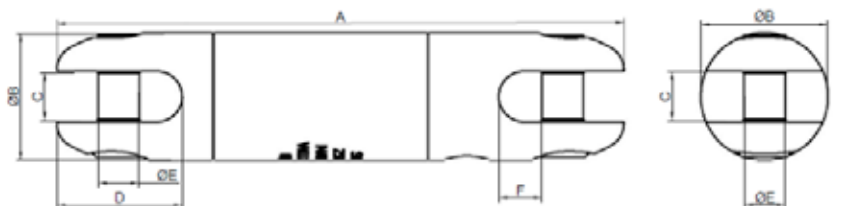


DIRECTIONAL DRILLING SWIVEL

Slingco Directional Drilling Swivels are designed to the highest specifications for underground pulling and drilling applications. All swivels are stringently quality tested and inspected to ensure optimum reliability and performance.



Slingco Part No	Safe Working Load (3:1)		A		Ø B		C		D		Ø E		F	
	lb	kN	in	mm	in	mm	in	mm	in	mm	in	mm	in	mm
ZSW 11133	8,500	37.8	7.24	183.8	1.62	41.2	0.63	16.0	1.60	40.6	0.53	13.4	0.55	13.9
ZSW 11134	10,000	44.4	8.32	211.3	2.00	50.8	0.75	19.0	1.77	45.0	0.59	14.9	0.75	19.0



Slingco has Cable Support Grips for every application:

- Alternative Energy Wind Farms & Turbines
- Aquatic
- Cell Towers
- Conduit Risers
- Data Centers
- Fish Farms
- Machine Shops
- Manufacturing
- Mining
- Oil & Gas Service Loop
- Utility Poles
- Waste Water

WIND TURBINE SUPPORT GRIP - HEAVY DUTY THIMBLE OFFSET EYE

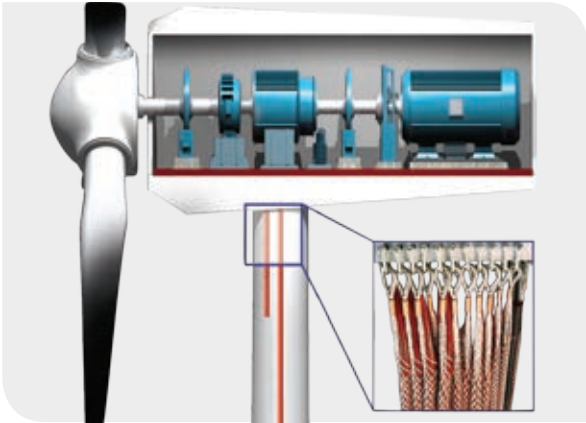


Slingco has developed a range of cable grips tailored for the renewable energy sector for use in:

- Cable installation – on-shore and off-shore
- Cable support inside wind turbines
- Cable management

For wind turbines, special features have been adapted to allow for minimal contact with the actual cable while still allowing excellent working loads and cable support.

The Slingco Wind Turbine Support Grip is manufactured from 316 Stainless Steel and provides cable support and control inside the wind turbine. It features rounded copper ferrules and offers reduced cable contact for high vibration environments. Custom grips can be adapted to meet any requirement.



Slingco Part No	Range		Lattice Length		Approx. Break Load	
	in	mm	in	mm	lb	kg
ZCS2844	0.31 - 0.40	8 - 10	25	635	1,485	670
ZCS2845	0.40 - 0.60	10 - 15	26	660	2,295	1,040
ZCS2846	0.60 - 0.80	15 - 20	28	711	2,900	1,315
ZCS2847	0.80 - 0.99	20 - 25	29	736	4,550	2,080
ZCS2848	1.0 - 1.19	25 - 30	29	736	5,450	2,475
ZCS2849	1.20 - 1.58	30 - 40	31	787	7,800	3,575
ZCS2850	1.58 - 1.98	40 - 50	39	990	10,750	4,890
ZCS2851	1.98 - 2.37	50 - 60	39	990	10,750	4,890
ZCS2852	2.38 - 2.77	60 - 70	47	1194	14,000	6,420
ZCS2853	2.77 - 3.55	70 - 90	47	1194	14,000	6,420
ZCS2854	3.55 - 4.33	90 - 110	47	1194	18,000	8,165

EXTENDED THIMBLE EYE HEAVY DUTY DOUBLE WEAVE STAINLESS STEEL CABLE GRIP



Slingco Part No	Range		Lattice Length		Eye Extension Length		Approx. Break Load	
	in	mm	in	mm	in	mm	lb	kg
ZCS2870	0.39 - 0.60	10 - 15	20	500	20	350	2,295	1,040
ZCS2871	0.60 - 0.80	15 - 20	20	500	20	350	2,903	1,315
ZCS2872	0.80 - 0.99	20 - 25	20	500	20	350	4,590	2,082
ZCS2873	1.0 - 1.19	25 - 30	20	500	20	350	5,468	2,480
ZCS2874	1.20 - 1.58	30 - 40	20	500	20	350	7,898	3,582

CABLE CONTROL AND GUIDANCE

TOOLS, BUCKLES AND BANDS

FOR QUICK AND EFFICIENT BANDING OF CABLE GRIPS, HOSES AND MORE

Slingco Banding Tools deliver a fast and easy way to install banding clamps. Designed for fast and efficient installation of steel bands for cable grips, hoses and many other applications, their drop-forged construction and comfortable design makes them quick and easy to use and guarantee a long and useful tool life.

We offer three different tool options, with bands and buckles available for each (order separately). See opposite for the bands and buckles suited to each tool type.

In addition to our range of steel bands available from stock we can also manufacture custom sizes if required. Please call with your requirements.

Slingco Fast Banding Tool



WITH PRE-LOOPED BANDS FOR QUICKLY SECURING GRIPS AND OTHER SIMPLE BANDING APPLICATIONS

Our Fast Banding Tool uses pre-looped punch-style bands for quick and secure banding of cable grips, hoses and other cylindrical items.

CPC2875

Slingco Light Duty Banding Tool



FOR UTILITY POLE AND OTHER LIGHT DUTY POLE BANDING APPLICATIONS

Featuring a built-in cutter with PVC coated handle for comfort, and a sliding block assembly with spring loaded lever. Operates on band widths 3/8" to 3/4" and thicknesses up to 0.030".

CPC8748

Slingco Heavy Duty Banding Tool

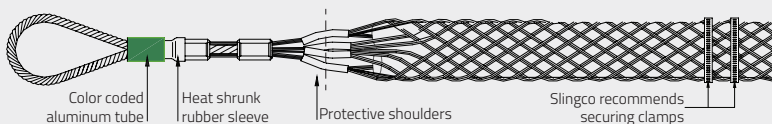


FOR UTILITY POLE AND OTHER HEAVY DUTY BANDING APPLICATIONS

Featuring a built-in cutter and a sliding block assembly. Operates on band widths 3/4", 1", and 1-1/4" and thickness of 0.044".

CPC8780

Note: Slingco recommends double banding the ends of cable grips.



FAST BANDING: PRE-LOOPED BANDS FOR QUICKLY



LIGHT DUTY BANDING: UTILITY POLE AND OTHER



HEAVY DUTY BANDING: UTILITY POLE AND OTHER



SECURING GRIPS AND OTHER SIMPLE BANDING APPLICATIONS

Use pre-looped punch style bands to quickly and securely band cable grips, hoses or other cylindrical items.

The bands are pre-looped through the buckle to slide over the end of the item being banded. Just tighten the band using the Slingco Punch Banding Tool then, when the band is tight, just punch the head of the tool and snip off the extra banding. Simple!

The sizes opposite refer to the inner loop diameter of the band. Select the size that will comfortably fit over the item being banded.

Open End Band – non pre-looped 201 SS 5/8" wide band with attached buckle. Includes punch style buckle. Use as single loop for larger diameter or double looped for smaller diameters and added strength. Maximum diameter for single or double loops is listed.

Banding tool					
Description					Slingco part no.
Standard punch-style banding tool.					CPC2875
Bands Pre-Looped					
Width	Thickness	Loop diameter	Pack quantity	Slingco part no.	
3/8"	0.025"	13/16"	100/box	CPC2876	
5/8"	0.030"	1"	100/box	CPC2880	
5/8"	0.030"	1.5"	100/box	CPC2879	
5/8"	0.030"	2.0"	100/box	CPC2878	
5/8"	0.030"	2.5"	50/box	CPC2877	
5/8"	0.030"	3.0"	50/box	CPC8532	
Open End Band – 201 SS					
Width	Thickness	Length	Loop diameter	Pack quantity	Slingco part no.
5/8"	0.030"	24"	6" Single Wrap 3" Double Wrap	50/box	CPC08596

LIGHT DUTY POLE BANDING APPLICATIONS

Use Slingco 3/4" wide 201 Stainless Steel, or the 1/2" wide 316 Stainless Steel, banding system to secure cables and other items to Utility poles, Light stands or other structures. The Light Duty Banding Tool allows you to easily tighten and secure any length band loop.

Slingco offers rolls of 3/4" and 1/2" wide banding material in 100 foot lengths. These 100 foot band rolls come in two convenient packages – standard stack-and-store cardboard packaging, or an easy to carry red plastic tote for the 3/4" and a blue plastic tote for the 1/2".

The buckles used to secure these bands are made of 201 Stainless Steel and designed for 3/4" width bands, and 316 Stainless Steel designed for 1/2" bands.



Banding tool					
Description					Slingco part no.
Operates on band widths 3/8" to 3/4" and thickness up to 0.030". Tool has a built in cutter with PVC coated handle for comfort and sliding block assembly with spring loaded lever.					CPC8748
Bands					
Width	Thickness	Avg break strength	Pack quantity	Weight	Slingco part no.
3/4"	0.030"	2250 lb	100' roll - Cardboard Box	7.7 lb	CPC8743
3/4"	0.030"	2250 lb	100' roll - Red Plastic Tote	7.7 lb	CPC8744
1/2"	0.030"	1200 lb	100' roll - Cardboard Box	5.1 lb	CPC08325
1/2"	0.030"	1200 lb	100' roll - Blue Plastic Tote	5.9 lb	CPC08326
Buckles					
Width	Pack quantity	Weight		Slingco part no.	
3/4"	100/Box	3.7 lb		CPC8746	
1/2"	100/Box	2.5 lb		CPC08327	

HEAVY DUTY BANDING APPLICATIONS

Use the Slingco 1-1/4" 201 Stainless Steel Banding system to secure cables and other items to structures and poles where extra strength hold is required. The Heavy Duty Banding Tool allows you to easily tighten and secure any length band loop.

Perfect for use with concrete utility poles. The extra width of this band provides stronger tensile strength than the 3/4" band as well as a wider holding surface. Useful in many application environments including Utility, Marine and manufacturing where securely attaching cables, hoses or tubes onto a cylindrical object is needed. 100 ft. band roll comes in easy to stack and store cardboard box.

Giant buckles are made of 201 Stainless Steel and designed for use with 1-1/4" wide bands.

Banding tool					
Description					Slingco part no.
Operates on bands widths 3/4", 1", and 1-1/4" and thickness of 0.044". Featuring a built-in cutter and a sliding block assembly.					CPC8780
Bands					
Width	Thickness	Average break strength	Pack quantity	Weight	Slingco part no.
1-1/4"	0.044"	5500 lb	100' roll in CARDBOARD BOX PACKAGING	17.2 lb	CPC8745
Buckles					
Width	Pack quantity	Weight		Slingco part no.	
1-1/4"	25/Box	3.2 lb		CPC8747	

HEAVY DUTY LARGE DIAMETER CABLE GRIPS

MARINE CABLE GRIPS



These specialty cable grips are extremely heavy duty and suitable for large underwater pulls, plus other applications in the oil and gas industries. Galvanized steel construction for heavy duty large diameter pulls. Applications include underwater cable installation. Available in single eye, double eye lace closing and double eye. Sizes range from 4 inches to over 20 inches. Manufactured to order.



Slingco Part No	Range		Lattice length		Approx. Break Load	
	in	mm	in	mm	lb	kg
SINGLE EYE						
ZCS3525	4 - 5	102-127	94	2,360	100,000	45,370
ZCS3526	5 - 6	127-152	94	2,360	105,000	47,640
ZCS3527	6 - 8	152-203	94	2,360	112,000	50,815
ZCS3528	8 - 10	203-255	94	2,360	138,000	62,600
ZCS3529	10 - 12	255-305	94	2,360	138,000	62,600
ZCS3530	12 - 14	305-355	94	2,360	138,000+	62,600+
ZCS3531	14 - 16	355-406	118.11	2,950	138,000+	62,600+
ZCS3532	16 - 18	406-457	131.79	3,290	138,000+	62,600+
ZCS3533	18 - 20	457-508	157.48	3,940	138,000+	62,600+
ZCS3534	20 - 23	508-584	196.85	4,920	138,000+	62,600+
DOUBLE EYE						
ZCS3535	4 - 5	102-127	94	2,360	123,000	55,800
ZCS3536	5 - 6	127-152	94	2,360	123,000	55,800
ZCS3537	6 - 8	152-203	94	2,360	127,500	57,850
ZCS3538	8 - 10	203-255	94	2,360	156,500	71,000
ZCS3539	10 - 12	255-305	94	2,360	156,500	71,000
ZCS3540	12 - 14	305-355	94	2,360	156,500+	71,000
ZCS3541	14 - 16	355-406	118.11	2,950	156,000+	71,000+
ZCS3542	16 - 18	406-457	131.79	3,290	156,500+	71,000+
ZCS3543	18 - 20	457-508	157.48	3,940	156,500+	71,000+
ZCS3544	20 - 23	508-584	196.85	4,920	156,500+	71,000+
DOUBLE EYE LACE UP						
ZCS3545	4 - 5	102-127	94	2,360	123,000	55,800
ZCS3546	5 - 6	127-152	94	2,360	123,000	55,800
ZCS3547	6 - 8	152-203	94	2,360	127,500	57,850
ZCS3548	8 - 10	203-255	94	2,360	156,500	71,000
ZCS3549	10 - 12	255-305	94	2,360	156,500	71,000
ZCS3550	12 - 14	305-355	94	2,360	156,500+	71,000
ZCS3551	14 - 16	355-406	118.11	2,950	156,000+	71,000+
ZCS3552	16 - 18	406-457	131.79	3,290	156,500+	71,000+
ZCS3553	18 - 20	457-508	157.48	3,940	156,500+	71,000+
ZCS3554	20 - 23	508-584	196.85	4,920	156,500+	71,000+

CAN'T FIND THE SPECIFICATION YOU NEED?
 Call or email for full ranges plus custom manufacture options

888 685 9478
 sales@slingco.com

10K DRIVE WRENCH ASSEMBLY



Our complete tool system for installation of screw anchors. The system includes:

- Orange Drive Wrench (#SAE09639)
- Yellow Drive Wrench (#SAE08666)
- Drive Wrench Lock (#SAE10425)
- 2.5 in Hex Kelly Bar Adapter (#SAE10486)
- 2.625 in Hex Kelly Bar Adapter (#SAE10427)

HEX KELLY BAR ADAPTERS

Slingco's Hex Kelly Bar Adapters are a key component in the Drive Wrench Assembly. The adapters are used to connect the Drive Wrench Lock Assembly to the Kelly Bar of the bucket truck. There are two versions available which fit the most common drive bar dimensions.

Slingco Part No.	Kelly Bar Shape	Adapter dimensions						Weight each	
		X		Y		Z		lb	kg
		in	mm	in	mm	in	mm		
SAE10486	HEX	2.5	63.5	4.25	108	8.25	210	16.3	7.39
SAE10427	HEX	2.625	66.7	4.25	108	8.25	210	16.7	7.57



DRIVE WRENCH LOCK ASSEMBLY

Slingco's Drive Wrench Lock Assembly attaches to the adapter and makes the installation of the anchor rod much easier. The three-position rings allow for easy capture of the Drive Wrench and the anchor rod, holding them securely while under torque, and releasing each when needed.

Slingco Part No.	Description	Weight	
		lb	kg
SAE10425	Drive Lock Assembly	18.4	8.35

DRIVE WRENCHES

Slingco's Drive Wrenches are designed to allow anchor rods to telescope inside them, and securing to the Drive Wrench Lock Assembly. The Drive Wrench transfers the torque from the drive motor to the screw anchor.

Rated to 10,000 ft-lb of torque, Slingco's Drive Wrenches are tough and can handle anchor installs in tough environments.

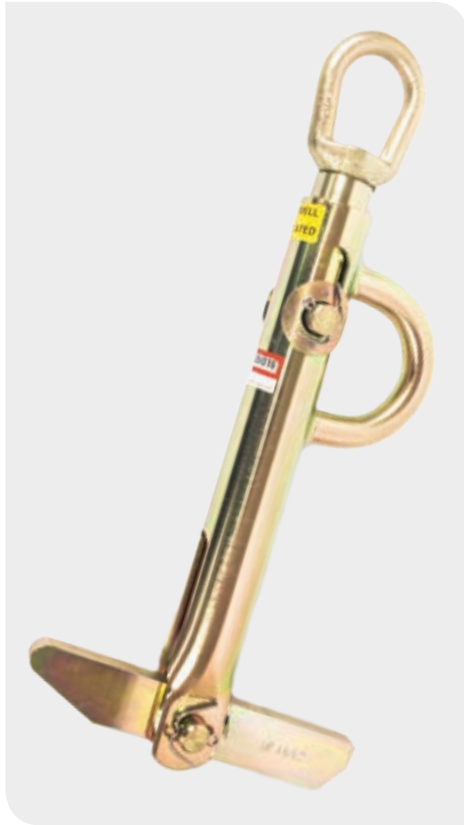
Slingco Part No.	Description	Hub Size		Shaft Size	
		in	mm	in	mm
SAE09639	10,000ft-lb Orange Drive Wrench	2.25	57	1.375	35
SAE08666	10,000ft-lb Yellow Drive Wrench	2.5	63.5	1.5	38

57 lb (28.85 kg) is the weight of each Drive Wrench

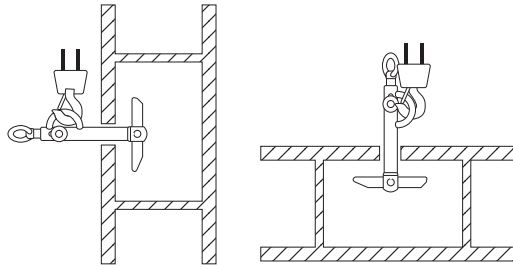


CABLE CONTROL AND GUIDANCE

REEL LIFTER



The Slingco Reel Lifter is a high capacity, compact unit that allows users in the utility construction industry to safely load, transport, and dispense wire and/or cable on-site. It is also used in many industrial applications to make moving and relocating reels in a warehouse easy. Now a task that normally used a team of three or four people can be done with just one, allowing the crew to operate more efficiently!



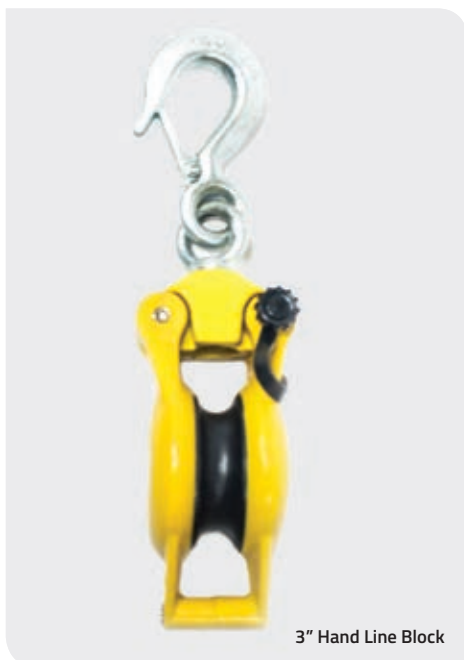
Makes handling large cable reels quick and easy, on-site or in warehouses.

- Rugged construction to lift and upend reels
- Easy rotation to unroll cable
- Counterweighted bottom arm for easy insertion in reel
- Side lifting eye allows reels to be put into a rolling or non-rolling position

Reel Lifter					
Arbor Hole Min. (ins)	Arbor Hole Max. (ins)	Capacity (lb)	Weight (lb)	Length (ins)	Slingco Part No.
2	4	3,000	6.50	16.125	ZLD08729
3	6	5,000	14.50	21.125	ZLD09186
3.25	6	12,000	32.33	30.53	ZLD10807

Reel Lifter Repair Kit	
3,000lb factory repair kit with extension springs, cable assemblies and all necessary pins for replacement of the interior cable system. Suitable for ZLD08729.	ZLD09708
5,000lb factory repair kit with extension springs, cable assemblies and all necessary pins for replacement of the interior cable system. Suitable for ZLD09186.	ZLD09707
12,000lb factory repair kit with extension springs, cable assemblies and all necessary pins for replacement of the interior cable system. Suitable for ZLD10807.	ZLD11126

HAND LINE TOOLS



3" Hand Line Block

Slingco's Hand Line Tools feature a 3" nylon fiberglass block, with a safe working load limit of 1,000 lb, and a double locking snap with a safe working load limit of 5,000 lb.

Our 3" Hand Line Block's sheave can accommodate a 5/8" diameter rope, and operates smoothly on the 1/2" diameter axle and swivel bearings. The side opening feature allows quick access to remove the hand line.

The Hand Line Hook is made of manganese bronze, 5-1/2 in long x 3 in wide, and is made for use with 1/2 in (12.5 mm) rope.

Slingco Part No.	Description	Working Load Limit (lb)
ZAB8725	3" Hand Line Block	1,000
HMI8556	Double Locking Snap	5,000
ZAB6502	Hand Line Hook	600



Double Locking Snap Hook



Hand Line Hook

MECHANICAL CRIMPING TOOLS



Slingco's Mechanical Crimping Tools have been created to complete the variety of utility distribution service connections that need to be made on the line, pole, and home. Our crimping tools have been designed to provide reliable crimps installing full-tension or non-tension connectors.

Slingco's Mechanical Crimping Tool's 'D3' groove allows 'W' style die inserts for installing taps, splices, and terminal connectors. The 'W' die inserts lock securely and easily into place with the positive lock, spring-loaded die buttons. Slingco also offers a Mechanical Crimping Tool that accepts Kearney type dies.

Our Mechanical Crimping Tools also have ergonomic handles for comfortable use and maximum leverage when making critical connections.

Slingco Part No.	Tool Type	Crimp Force (lb)	Length (in)	Weight (lb)
TCR7002	O&D	9,000	25.75	7
TCR7004	BG&D	9,000	25.75	7
TCR08735	5/8 Nose Die & Kearney Seat (Accepts 'Kearney' type)	9,000	25.75	7

Slingco W-Die Sets (D3 Insert)

Slingco Part No.	Slingco Ref.	Burndy Equiv.
TCR7020	S6-K840	WK840
TCR7021	S6-BG	WBG
TCR7022	S6-O	WO

Slingco Part No.	Slingco Ref.	Burndy Equiv.
TCR7023	S6-247	W247
TCR7024	S6-249	W249

60 TON HYDRAULIC CRIMPING TOOL



Slingco's Hydraulic Crimping Tools are designed to crimp sleeves and lugs on ACSR and ACAR transmission & distribution cables using dies that meet the standards of the utility industry. Our crimping tools are ideal for use in constructing substations and transmission lines.

The Single-Acting Crimping Tool uses hydraulic pressure to advance the ram into position, and an internal spring to return the ram to the original position. The Double-Acting Crimping Tool advances and returns the ram using hydraulic pressure alone, eliminating the possibility of the ram sticking or becoming jammed.

Our Hydraulic Crimping Tools come in a steel carrying case, and are lightweight and portable. Our crimping tools accept Slingco S60 Dies, or any shell-type dies used with Alcoa or Burndy 60-ton crimping tools.

Slingco Part No.	Tool Type	Crimp Force (Tons)	Operating Pressure
TCR7003	Single Action	60	10,000 psi (700 bar)
TCR7018	Double Action	60	10,000 psi (700 bar)

- Accepts Burndy L and Alcoa 6000 Series dies
- Steel Carrying Case
- Includes Ground Stand
- Lifting eye for hoist work
- For Crimping ACSR and ACAR transmission and distribution cables

Slingco Part No.	Slingco Ref.	Alcoa Equiv.
TCR7067	S60-10SH	6010SH
TCR7068	S60-12SH	6012SH
TCR7069	S60-14SH	6014SH
TCR7070	S60-16SH	6016SH
TCR7071	S60-18SH	6018SH
TCR7072	S60-20SH	6020SH
TCR7073	S60-24SH	6024SH
TCR7074	S60-27SH	6027SH

Slingco Part No.	Slingco Ref.	Alcoa Equiv.
TCR7075	S60-30AH	6030AH
TCR7076	S60-34AH	6034AH
TCR7077	S60-36AH	6036AH
TCR7078	S60-38AH	6038AH
TCR7079	S60-40AH	6040AH
TCR7080	S60-44AH	6044AH
TCR7081	S60-48AH	6048AH
TCR7082	S60-52AH	6052AH

Slingco Part No.	Slingco Ref.	Alcoa Equiv.
TCR7083	S60-56AH	6056AH
TCR7084	S60-60AH	6060AH
TCR7085	S60-64AH	6064AH
TCR7086	S60-68AH	6068AH
TCR7087	S60-72AH	6072AH
TCR7088	S60-76AH	6076AH
TCR7089	S60-80AH	6080AH
TCR7090	S60-84AH	6084AH

Slingco Part No.	Slingco Ref.	Alcoa Equiv.
TCR7091	S60-11CD	6011CD
TCR7092	S60-12CD	6012CD
TCR7093	S60-13CD	6013CD
TCR7094	S60-14CD	6014CD
TCR7095	S60-15CD	6015CD
TCR7096	S60-16CD	6016CD
TCR7097	S60-17CD	6017CD

CABLE CONTROL AND GUIDANCE/ACCESSORIES

100 TON HYDRAULIC CRIMPING TOOL



The Slingco 100 ton crimper provides secure crimps for copper, aluminum and steel conductor and sleeves. It is designed as a portable tool for installing compression sleeves and terminals for transmission line maintenance. With a max pressure of 700bar/10,000psi and max output of 100 tons. The TCR08490 has a single-action cylinder with spring return. The unit may be converted to double-action functionality with slight modification. Tool comes in steel carrying case.

- Weight 78.5 lbs
- Copper Crimp Range: up to 2.5" OD sleeve
- Aluminum Crimp Range: up to 3.0" OD sleeve
- Steel Crimp Range: up to 1.25" OD sleeve

Die sets for 100 ton hydraulic crimpers available. Slingco 100 tone dies work with 100 ton presses which accept shell type dies including the Slingco TCR08490. Dies available in many sizes for different Circumferential or Hexagonal profiles (CD, AH, SH).

Slingco Part No	Crimping Force	Operating Pressure	Action	Tool Weight	Oil Required
TCR08490	100 Tons	10,000 psi (700 bar)	Single-Action	78 lb	422 cc

Replacement Dies for 100-Ton Hydraulic Crimping Tools

Slingco Part No.	Slingco Ref.	Alcoa Equivalent
TCR08544	S100-10SH	10010SH
TCR08545	S100-12SH	10012SH
TCR08546	S100-14SH	10014SH
TCR08547	S100-16SH	10016SH
TCR08548	S100-18SH	10018SH
TCR08549	S100-20SH	10020SH
TCR08550	S100-74SH	10074SH
TCR08551	S100-75SH	10075SH
TCR08552	S100-20AH	10020AH
TCR08553	S100-24AH	10024AH
TCR08554	S100-27AH	10027AH
TCR08555	S100-30AH	10030AH
TCR08556	S100-34AH	10034AH

Slingco Part No.	Slingco Ref.	Alcoa Equivalent
TCR08557	S100-36AH	10036AH
TCR08558	S100-38AH	10038AH
TCR08559	S100-40AH	10040AH
TCR08560	S100-74AH	10074AH
TCR08561	S100-75AH	10075AH
TCR08562	S100-76AH	10076AH
TCR08563	S100-42AH	10042AH
TCR08564	S100-44AH	10044AH
TCR08565	S100-46AH	10046AH
TCR08566	S100-48AH	10048AH
TCR08567	S100-07CD	10007CD
TCR08568	S100-08CD	10008CD
TCR08569	S100-09CD	10009CD

Slingco Part No.	Slingco Ref.	Alcoa Equivalent
TCR08570	S100-10CD	10010CD
TCR08571	S100-11CD	10011CD
TCR08572	S100-12CD	10012CD
TCR08573	S100-13CD	10013CD
TCR08574	S100-14CD	10014CD
TCR08575	S100-15CD	10015CD
TCR08576	S100-16CD	10016CD
TCR08577	S100-17CD	10017CD
TCR08578	S100-18CD	10018CD
TCR08579	S100-19CD	10019CD
TCR08580	S100-20CD	10020CD

DIRT TARP



Slingco's range of heavy-duty, re-usable dirt tarps have been created with safety in mind. Keeping workers out of awkward, injury-prone positions is better for their long-term health and the company's bottom line. Dirt tarps have become a must-have product at utility construction sites. You can find Slingco Dirt Tarps being used at pole change-outs, transformer terminations, pedestals, as well as underground gas, telephone, and other underground utility applications. In fact, with the ability to move crushed rock, sand, dirt, wet cement, dig spoils, and other contaminated soil, there are few reasons NOT to have a Slingco Dirt Tarp on the project!

Slingco Part No.	Tarp Dimensions		Maximum Capacity	
	ft	m	lb	kg
ZLD10015	10 x 10	3.05 x 3.05	5,000	2,267
ZLD10016	8 x 8	2.44 x 2.44	5,000	2,267
ZLD10793	7 x 7	2.13 x 2.13	4,000	1,814
ZLD10792	6 x 6	1.83 x 1.83	4,000	1,814

35KV JUMPER CLAMP

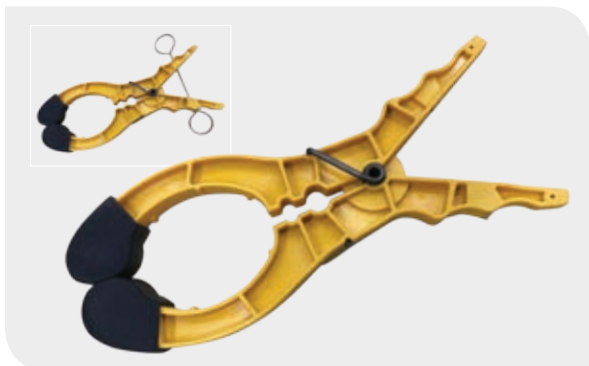


Slingco's Jumper Clamps are used as a part of jumper cable assemblies to bypass work areas when equipment is under repair or being upgraded. Jumper clamps are lightweight and impact resistant making them incredibly durable. We make inspection of the cable, ferrule, and clamp simple and easy via the transparent clamp body. The jaw of the Slingco Jumper Clamp and floating ring contact is made from a copper-based alloy.

Slingco Part No.	Line Range MCM (in)	Max. Continuous Amps	Threading (threads per inch)	Length in (mm)	Weight lb (kg)
ZSC09344	954 (0.162 - 1.25)	400	5/8" - 11	11.5 (292)	2.5 (1.15)
ZSC12110	477 (0.162 - 0.9)	400	5/8" - 11	11.5 (292)	2.4 (1.09)

NOTE: Slingco Jumper Clamps are sold individually. Slingco Jumper Clamps meet ASTM F2321 standard.

RUBBER BLANKET CLAMP PIN



Used to hold insulating blankets and other types of rubber coverups in place, the Slingco Blanket Clamp Pin is constructed of ultraviolet stabilized fiberglass reinforced polymer. Extra holes in the center of the body are used to grip conductors and prevent linehose from sliding. Holes have also been placed in the handles to enable attachment of warnings, tags, and/or flags. The handles of the pin are shaped to engage with the end ferrule of a clampstick (shotgun stick).

Slingco Part No.	Length		Jaw Opening		Weight		Note
	in	mm	in	mm	oz	g	
ZPE10962	9.5	241	5	127	5	141.7	
ZPE12136	9.5	241	5	127	5.4	153	with Hot Stick Clip

GUY WIRE DISPENSERS



Slingco's Guy Wire and Triplex Dispensers save linemen time, effort, and keep them safe. Operation of the dispensers is kept smooth thanks to the high load sealed ball bearing. Dispensers are constructed of high strength steel coated in a durable black finish to endure the harsh outdoor environment. Easy to operate release knobs allow for quick and easy loading and unloading. Knob Replacement Kits contains all parts needed to replace securement knobs. Normal use and wear may cause knobs to loosen, or damage may occur when knobs are struck by other equipment. Use replacements to ensure a safe, tight closure. Units permanently mount to truck or other surface.

Slingco Part No.	Max. Wire Size		Coil Width Capacity		Coil Diameter Range		Weight	
	in	mm	in	mm	in	mm	lb	kg
ZWM09207	0.5	12.7	4.75	120	22-31	559-787	45	20.5
ZWM12496	0.5	12.7	8.75	222	32-36	813-914	54	24.5
ZWM09903	-	-	10.25	260	26-32	660-812	54	24.5
Slingco Part No.								
ZWM09741	Replacement Kit for Standard Dispenser - all parts needed to replace securement knobs.							
ZWM12697	Replacement Kit for Large Dispenser - all parts needed to replace securement knobs.							
ZWM12698	Replacement Kit for Triplex Dispenser - all parts needed to replace securement knobs.							

POLE LINE HARDWARE

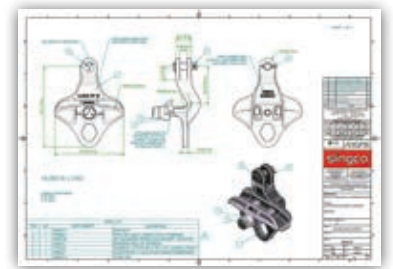
POLE LINE SUSPENSION CLAMPS



Slingco suspension conductor clamps provide safe and quick installation and removal of the conductor when attached to the insulator. A single fastener fully opens and closes the jaw. The clamps come in a variety of sizes to accommodate conductors from 0.16 to 1.50 inch diameter, and loadings of up to 18,000 lbs. To prevent loss, all moving parts of the clamps are captive.



Depending on size, the clamps are either made from heat treated aluminum alloy 356-T6 or ductile iron 60-45-15 and hot dip galvanized for corrosion resistance.



THE SOLUTION APPROACH

HOW WE ARE DIFFERENT

We work with Utilities and Contractors through distributors to provide a cost-saving approach to Pole Line Hardware.

Instead of simply offering a range that's similar to what's already in use, we offer an equivalent to standards-compliant products, manufactured to the exact specifications you need.

This makes transition to the Slingco brand easy, but also gives standards engineers the opportunity to

work with us on new projects and designs.

Once the Pole Line hardware is approved, we keep the product in stock for immediate shipping whenever needed.

This is a new approach, already successfully introduced into other industries by Slingco, that we're now delighted to bring to the OHL and related markets.

CALL SLINGCO AT 888 685 9478 AND LET US PUT OUR SOLUTION APPROACH TO WORK FOR YOU

CABLE PULLING GRIPS AND CABLE SUPPORT GRIPS

ASSESSMENT OF SUITABILITY

There are many factors that must be taken into account when assessing the suitability of a cable grip for a proposed application and trying to calculate a safe working load. These include:

- Size of cable grip in relation to size/shape of gripped object(s)
- Stability of object(s) when gripped
- Grip surface of object(s)
- Resistive force of object(s)
- Anticipated path of movement, including possible obstructions
- Approximate breaking strength of the cable grip
- Condition of cable grip
- Suitability and compatibility of any attachments used
- Environment / operating conditions
- Persons at risk

If you have any questions regarding suitability for any particular application please call the distributor who supplied the cable grip or our in-house Technical Department.

Please note: Slingco cable grips must be double steel banded securely before being pulled.

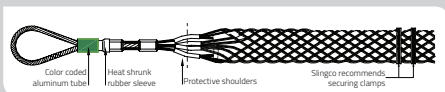
LATTICE DIMENSIONS

Lattice dimensions shown are as fitted to a nominal diameter of cable and prior 'free length' may be slightly longer than stated.

APPROXIMATE BREAK LOAD

This is the calculated average based on actual testing done by Slingco. Approximate break loads are quoted as a guide only.

TYPICAL CONFIGURATIONS



SAFE WORKING LOAD

Application load is normally calculated to be reduced by at least a factor of 5x the Approximate break load. Due to the wide variety of application parameters, the end user must apply a sensible safety factor to suit the safety requirements for the conditions of use.

The Safe Working Load (SWL) of a Slingco cable grip will depend on the Factor of Safety (FOS) applied to the Minimum Breaking Load.

FACTOR OF SAFETY (FOS)

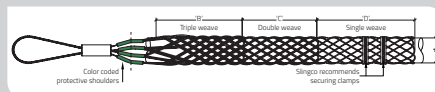
Where the operational risk is considered to be normal, it is recommended that a FOS of 5 be applied, for a high risk operation a FOS of at least 10 should be considered. It is impossible to catalog or guarantee a safety factor that will apply for all applications.

Approximate Break Loads stated on any certification, the recommended Factors of Safety, and any implied or stated fitness for purpose, are all only applicable when the cable grip is as new and unused.

A 20% variance in break loads must be allowed for when selecting a cable grip; a suitable swivel must be used if there is 'twist' in the cable.

Pulling devices should only be attached via the pulling eye.

Torsional stress must be dealt with when using grips for line pulls and wire splices. When twisting forces are present use a swivel that rotates under load to release torsional stress.



Cable Grip Safety Information

- Ensure that the cable grip mesh fits conductor correctly
- Ensure that the conductor fits up to the mid-point of the protective shoulder
- Clamp the ends of the cable grip when attaching the conductor. We recommend between 1 1/4" and 2 1/4" from the end of the cable grips
- **SECURE CLAMPING MUST BE USED ON SLINGCO CABLE GRIPS**
- Never modify or attempt to repair any grip
- Ensure proper maintenance of the cable grip. If in doubt call 888-685-9478
- Check the condition of the cable grip, and that it is the correct size for the intended application - do not exceed the rated capacity
- Grips that are worn, bent or otherwise damaged should not be used
- Grips are only to be used for temporary installations
- Pulling devices should only be attached via the pulling eye
- Cable grips must only be fitted and used by trained competent person(s)



SLINGCO CABLE GRIPS MUST NOT BE USED TO THEIR APPROXIMATE BREAKING STRENGTH. A SENSIBLE SAFETY FACTOR MUST ALWAYS BE USED. IF IN DOUBT CONTACT THE MANUFACTURER OR THE DISTRIBUTOR THAT SUPPLIED THE GRIP!

If you have any questions regarding suitability for any particular application please call 888-685-9478



IMPORTANT TECHNICAL INFORMATION

SINGLE AND DOUBLE EYE CABLE GRIP INSTRUCTIONS

PLEASE NOTE: The condition of the cable grip should always be checked prior to use. The correct size of grip should always be used for the intended application. The rated capacity of the grip should never be exceeded. Grips that are worn, bent or otherwise damaged should not be used.



Select the correct grip for the diameter of the conductor.



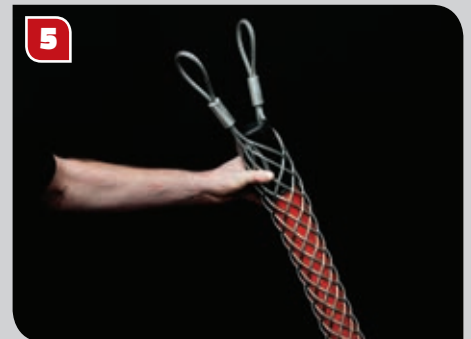
Prior to use, the lattice at the end of the grip needs to be widened. This can be easily achieved by pressing the end of the grip against a hard surface, which causes the lattice to expand.



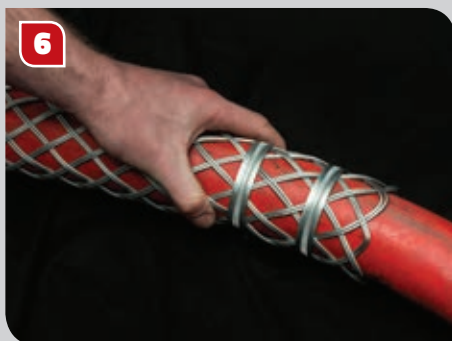
The grip should then be placed over the end of the conductor...



...and pushed over the conductor.



The grip then needs to be pushed along so that all the lattice is in contact with the conductor.



Once the cable grip is in place on the conductor, two clamps should be fitted to the end of the grip (as shown). We recommend between 1 ¼" (30mm) and 2 ¼" (55mm) away from the end of the cable grip.



Tape should then be wound around the end of the cable grip furthest away from the eye ends.



This will prevent the cable grip from snagging when in use.

LACE UP CABLE GRIP INSTRUCTIONS

PLEASE NOTE: The images shown here use double weave cable grips. When lacing single weave cable grips please use single wire lace; use double-laced for double weave cable grips; and use triple-laced for triple weave cable grips.



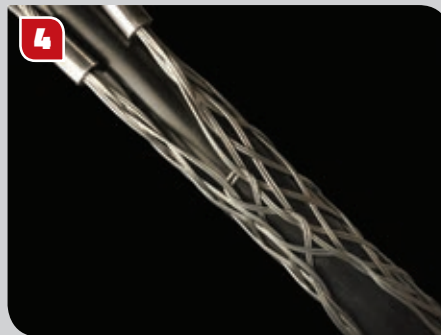
1 Start the lacing from the 'eye' end or anchoring end of the cable grip.



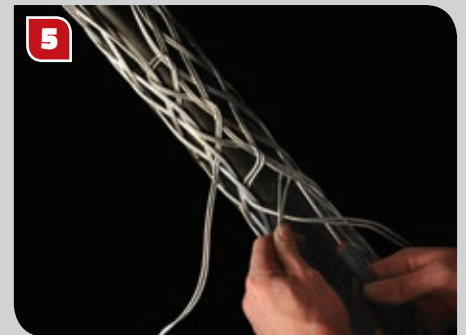
2 Thread the lace through the first two loops of the split and pull through until the laces are centered at this point.



3 Don't pull the lace too tight at this stage. Leave a space between adjoining loops roughly equal to the width of one diamond of the mesh.



4 Continue down the length of the cable grip. Try to maintain equal tension and equal spacing throughout as this leads to a more stable and equal grip.



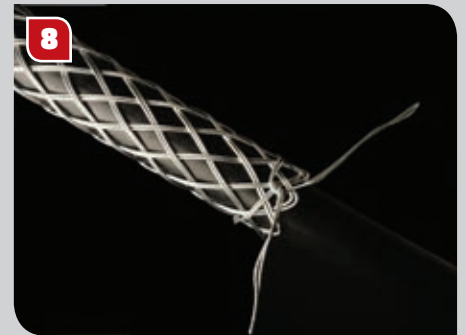
5 As you continue down the length, pull the open sides of the grip as wide apart as required.



6 Try to achieve an even and neat lace-up as this assists with the strength of the grip when pulling.



7 Finally, tie the ends of the lace once or twice round the end of the cable grip twisting the ends together securely. Excess lace can be cut off.



8 Add any additional support as required – banding is recommended. The Slingco cable grip is now ready to use.



TRANSMISSION
& DISTRIBUTION,
INDUSTRIAL,
OIL & GAS,
AEROSPACE,
RIGGING, MINING
& CONSTRUCTION

**SLINGCO
DELIVERS**



FOR ANY INQUIRIES CALL TODAY ON
888 685 9478

Slingco America, Inc.
130 Celtic Blvd, Tyrone, Georgia, 30290, USA
TOLL FREE: 888 685 9478 · Fax: 888 728 4047
sales@slingcoamerica.com

slingcoamerica.com

This document is for marketing purposes only. The information contained herein is presented as general information and no representation or warranty is expressly or impliedly given as to its accuracy, completeness or correctness. It does not constitute part of a legal offer or contract. For technical specifications, please contact Slingco America, Inc. April 2021 - v1.94